

Hang on to any paperwork from yesterday. We will deal with it in a few minutes

Answer the following in complete sentences

**Sacred Space = A meaningful place distinguished or distinct from other places**

- What are some examples of sacred spaces societies and people create or recognize?
- Are there traditions associated with them? (Provide examples)
- Why do we create sacred spaces?

# Prehistoric Art

---

# Incised Material

---



# Apollo 11 Stones

---



## Apollo 11 Stones

---

- Namibia
- C. 23,000 BCE
  - Difficult to date
- Charcoal on Stone
- Therianthrope?
  - Human that has morphed into an animal?
  - Complex belief system?
- Profile view



# Lascaux Cave



Photograph by Sisse Brimberg

 NATIONAL  
GEOGRAPHIC

© 2007 National Geographic Society. All rights reserved.

● Major Paleolithic caves in France and Spain





Hall of Bulls = Frieze = horizontal decoration

---



la salle des Taureaux

En savoir 

Hall of Bulls = Frieze = horizontal decoration



Twisted profile/perspective

Animals appear in motion – use of perspective on legs

---



# Great Hall of the Bulls

---

- Lascaux Cave, France



- 15,000–13,000 B.C.E.
- Caves were likely sacred space
- Why a large step in intellectual development? Religious development?
- Multiple generations – overlapping images

Photograph by Steve Brinkley

NATIONAL  
GEOGRAPHIC

Sister Wendy would like to tell you about Lascaux Cave

---





THE MISTS  

---

OF TIME

## Pech Merle Cave (France)

---

- Note the rock formation on the right of the image







What do you see?  
What could it mean?



## Running Horned Woman, Tassili n'Ajjer, Algeria, 6000-4000 BCE

- Deity in human form --- no facial features
- Evidence the image is of a female?
- Ritual attire
- Twisted perspective – profile body but not shoulders and head
- Smaller figures are from a later period





What is this?

Archaeologists suggest this is a cloud of grain falling from a wheatfield or a cloud of water drops....why would these be important to people in the region?

White dots? Scarification?



Prehistoric female figures





Tlatilco female figurine.  
Central Mexico, site of Tlatilco.  
1200–900 B.C.E. Ceramic.





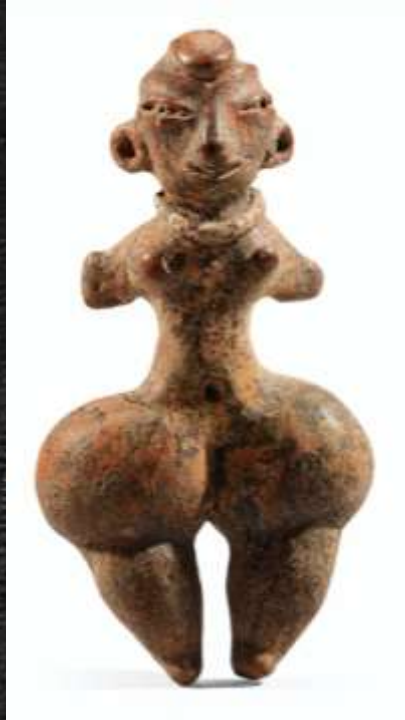
**Olmec**

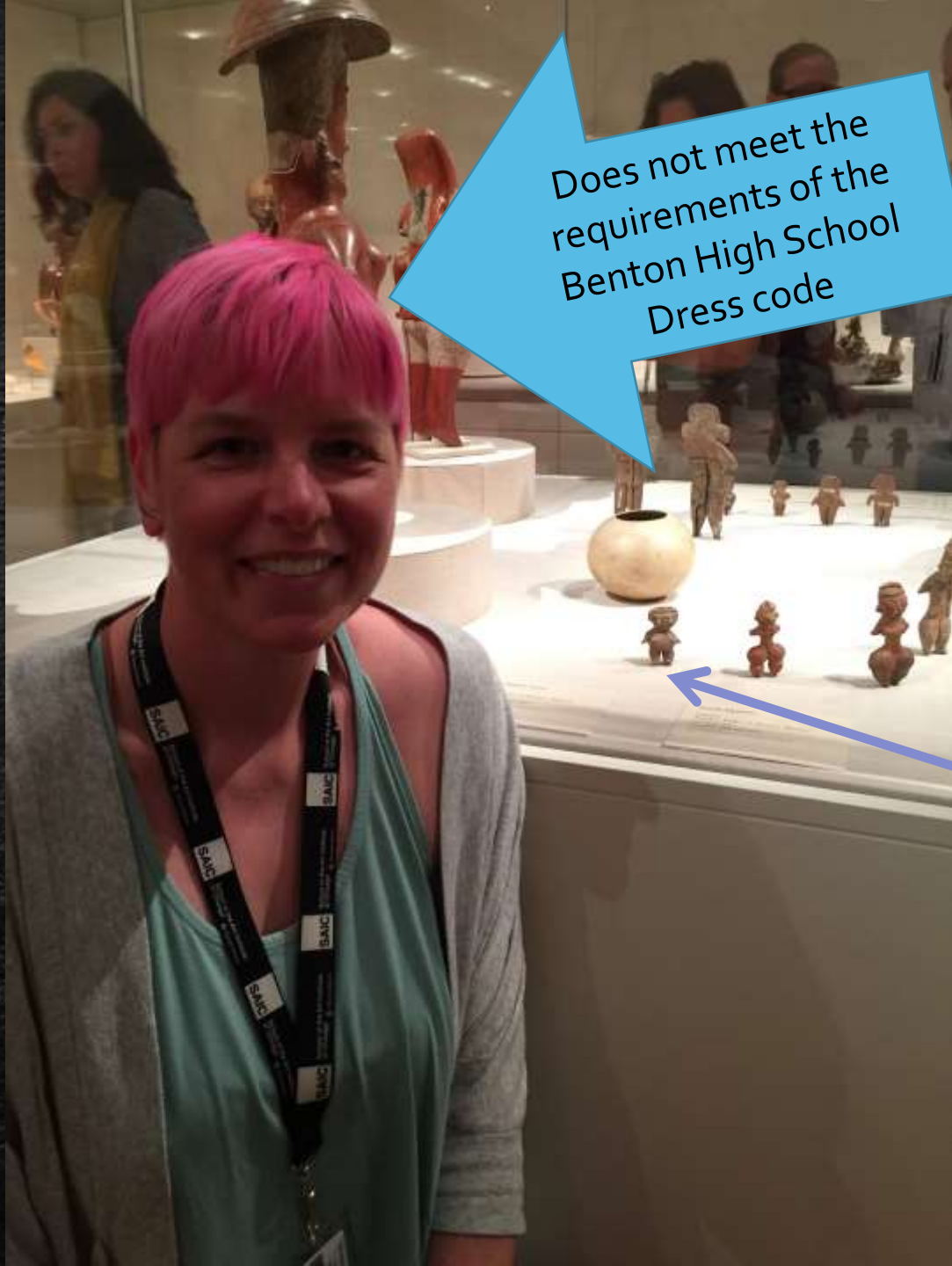


**Tlatilco**









Does not meet the requirements of the Benton High School Dress code





## Camelid Sacrum In the Shape of a Canine.

- In English: Pelvis bone of extinct camel thing carved in the shape of a dog's head



Tequixquiac, central Mexico  
14,000-7000 B.C.E.



What does this suggest about the artist?

---



## Camelid Sacrum In the Shape of a Canine.

---

- In English: Pelvis bone of extinct camel thing carved in the shape of a dog's head
- Importance of the sacrum bone in Mesoamerica
- Continued use of ceremonial masks in Mesoamerica and other cultures



Tequixquiac, central Mexico  
14,000-7000 B.C.E.

This is an  
info graph



Divide into distinct groups  
of 3-4

Move around and make  
room for yourselves

Select one person to go to the  
library and pick out the color of  
your group's paper. The paper  
should be around poster sized







claws

claws

touch here,  
risk being clawed

claws

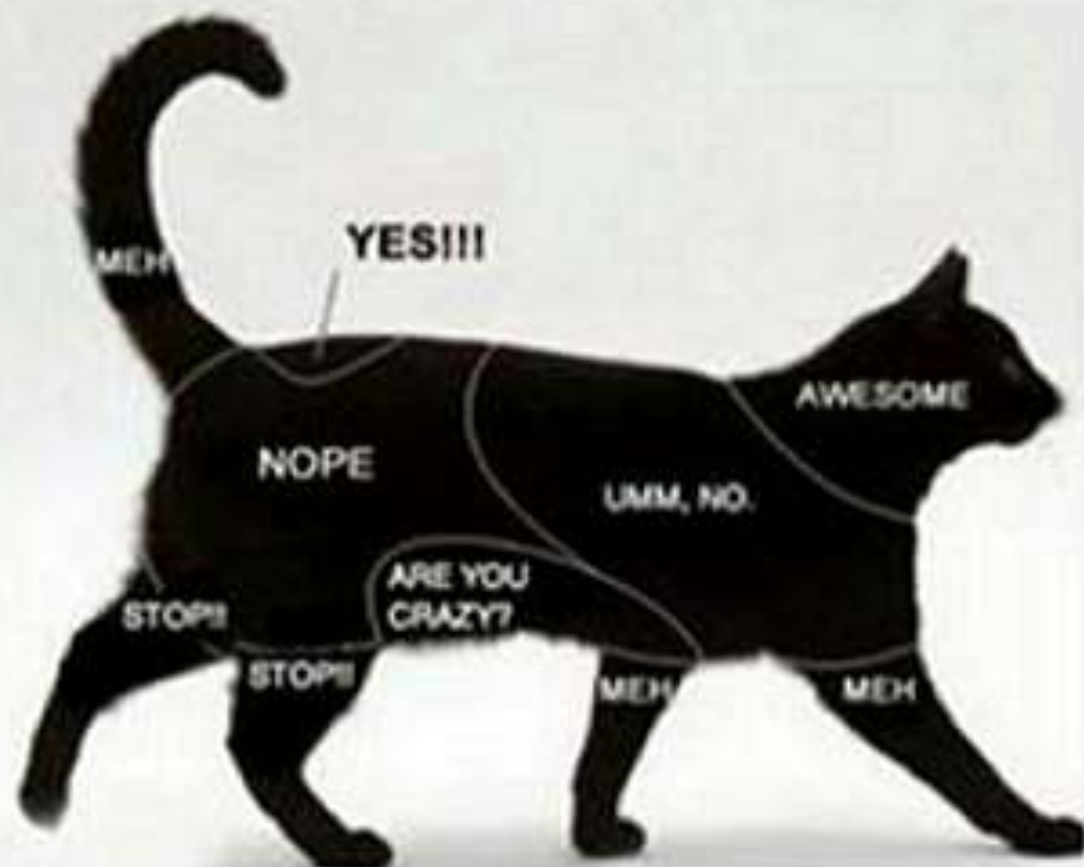
teeth

(dripping with bacteria)

claws

unpredictable thought  
processes here

## PETTING CHART FOR YOUR CAT



## PETTING CHART FOR YOUR DOG



# Common Methodologies of Monster Vanquishing



Frankenstein's Monster



King Kong\*



Killer Robot



Invisible Man



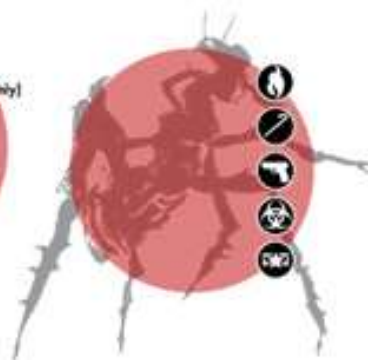
Godzilla\*



Ghost



Werewolf



Alien



Zombie



Blob\*



Mummy



Vampire

\*not to scale

❄️ Extreme Cold

🦠 Common Cold

🔫 Armed Forces

🗡️ Melee Weapon

🔫 Firearms

☀️ Sunlight

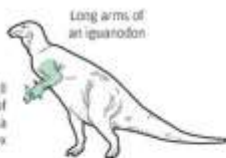
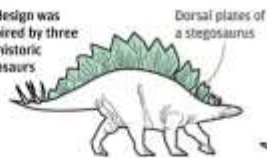
🔥 Fire

✝️ Exorcism

# ゴジラ

Godzilla's name is a transliteration of Gōjira (ゴジラ), a combination of two Japanese words gorilla (ゴリラ), meaning gorilla, and kujira (鯨 or クジラ), meaning whale

Its design was inspired by three prehistoric dinosaurs



## Godzilla is back

Sixty years after Godzilla first emerged, the radioactive monster is back on the big screen again. The latest US version casts the big guy as an impossibly massive force of computer-generated destruction - a far cry from the monster's humble beginnings as a man in a rubber suit trashing balsa-wood models of cities. During those six decades, Godzilla has undergone numerous transformations and battled a range of memorable adversaries - the best of which we present below.

### The origin

1 During military tests, atomic bombs are exploded over an island in the Pacific



2 Godzilla is a prehistoric sea monster awakened and empowered by the nuclear radiation



3 Godzilla is an allegory representing relations between Japan and the US. First he is the enemy of Japan and attacks and destroys its cities, then later is a friend and defender of the country

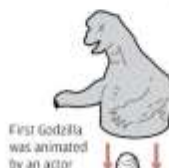
### 1954

Created by Tomoyuki Tanaka to illustrate the terror Japanese felt after the atomic bombings of Hiroshima and Nagasaki. The filmmaker wanted to symbolise nature's revenge

Electrical discharge through dorsal plates

Carbon scales covering body

Skin texture was inspired by the keloid scars seen on Hiroshima survivors



First Godzilla was animated by an actor



Actor  
Lasex costume

### Battra

Appears in both larval and fully grown form, as a giant and horrible butterfly



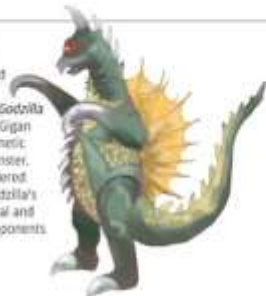
### Rodan

Mutated pterosaur introduced in 1956, initially an enemy of Godzilla, it later becomes an ally



### Gigan

Introduced in the 1972 film Godzilla vs Gigan, Gigan is a cybernetic space monster. It's considered one of Godzilla's most brutal and violent opponents

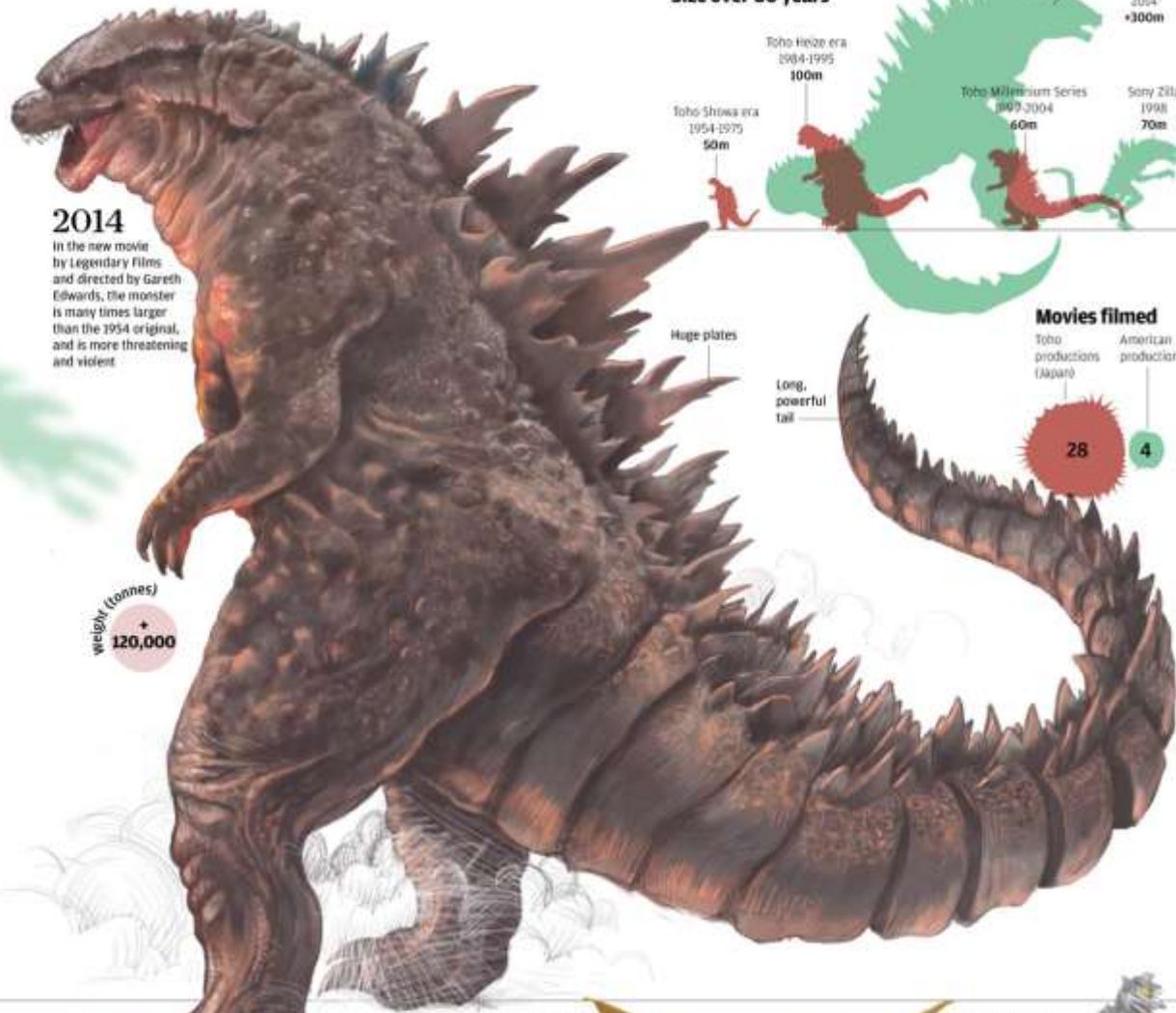


Weight (tonnes)  
+ 120,000

Weight (tonnes)  
20,000

### 2014

In the new movie by Legendary Films and directed by Gareth Edwards, the monster is many times larger than the 1954 original, and is more threatening and violent



### Size over 60 years



### Movies filmed

Toho productions (Japan) 28  
American productions 4

### Historical enemies

#### Anguirus

The first other monster we see Godzilla fighting in 1955's Godzilla Raids Again. It's a dinosaur-armadillo hybrid, and has no special powers or abilities whatsoever



#### King Ghidorah

Appears in 1962 as an armless, three-headed dragon with large wings and two tails. It's an alien that travels to earth in a magnetic meteorite, and devastates Japan until repelled by Godzilla, Rodan, and Muthra



#### Mechagodzilla

Introduced in 1974 in Godzilla vs Mechagodzilla film. A robot monster created by a race of ape-like aliens (also known as Sirtivan) in the image of Godzilla



Quiz coming up!

---

## Researching interesting things about obscure prehistoric art

- Research the following terms in relation to art history
  - Form
  - Function
  - Content
  - Context

Use these themes to create an info graph explaining the group's selected work.

Be ready to discuss your work...yes, they will be prominently displayed around the room

You have until the end of the block tomorrow to complete this assignment

Don't forget to add interesting supplementary information

Find your group's poster and  
complete your assignment





**Place posters in an organized fashion around the room**

**They must be placed so others can read them**

**Use the tape provided and please share**

**Do not waste tape**

**Be calm**

Bushe1 with IbeX Motifs, Susa (modern day Iran), 4200 BCE,  
Painted Terra Cotta



12"





Aquatic Birds

registers

registers

Meander pattern

registers

Abstract shapes  
and images

registers



**KHAN**  
ACADEMY



Anthropomorphic Stele, Saudi Arabia, 4000-3000 B.C.E.



**Stele:** Vertical stone monument usually carved with relief or text

Pronounce Stele

**4000-3000 BCE = Pre-Islamic: Why does that make sense considering the content (even if you didn't know the date?)**





The Ambum Stone - Prehistoric

PAPUA & NEW GUINEA







Jade *cong*. Liangzhu, China. 3300–2200 B.C.E. Carved jade.

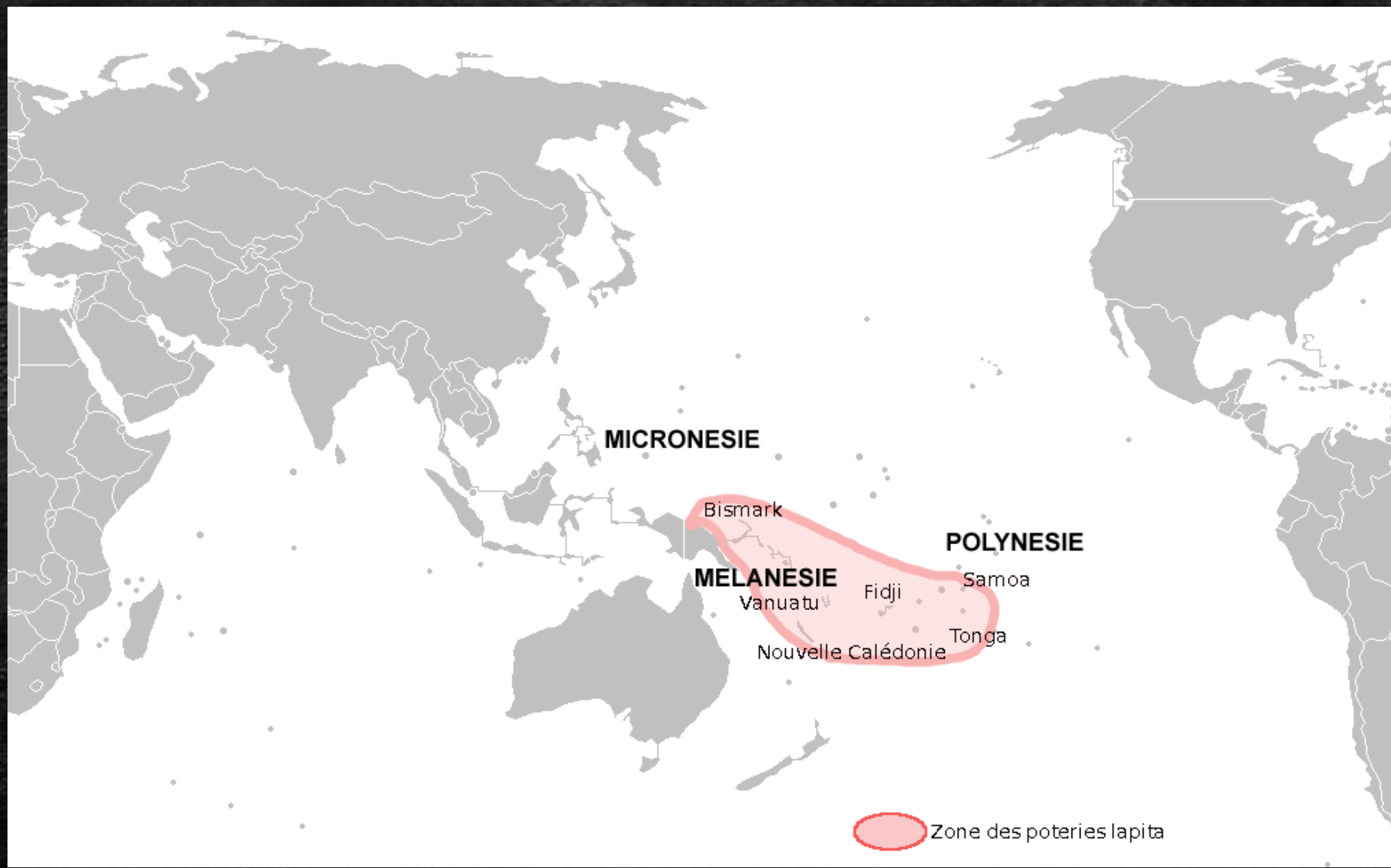


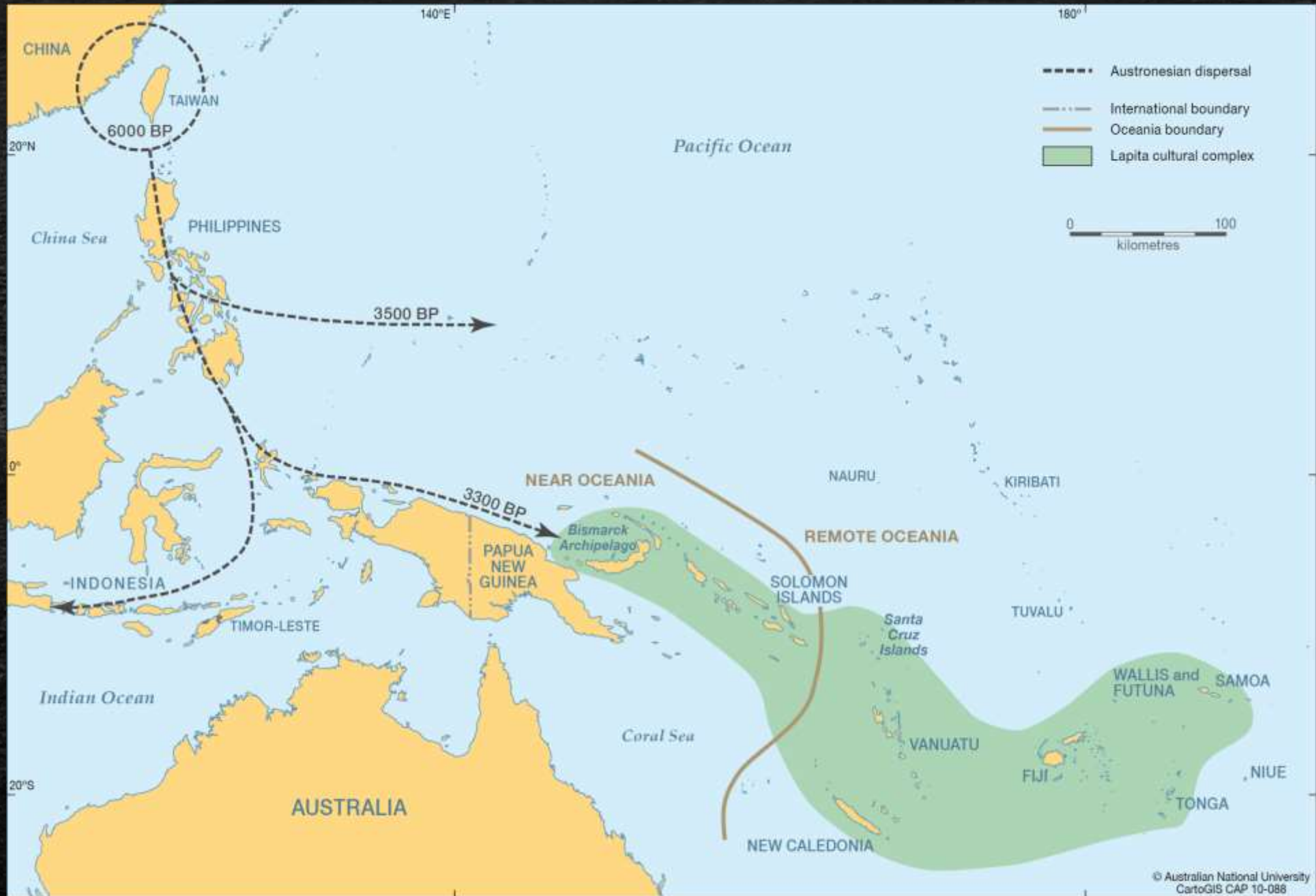
Terra Cotta Fragment, Lapita Culture, Solomon Islands, c. 1000 BCE, Incised Terra Cotta

---

- Lapita Culture
  - Agricultural
  - Established communities
  - Travel and settlement









*Stylized Faces*

Repeating Geometric  
Patterns

Pottery often used  
as funerary art

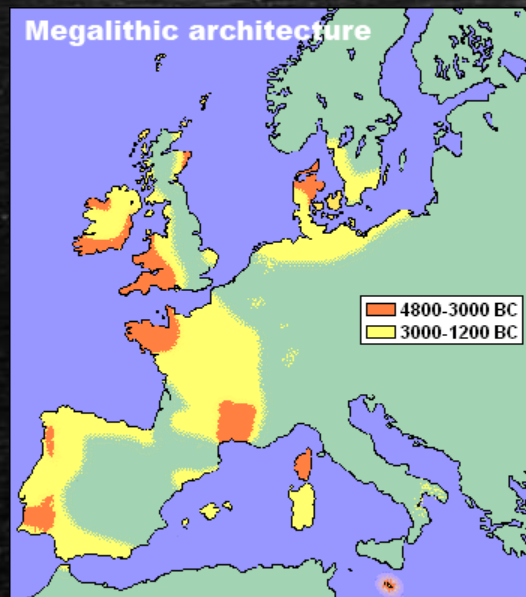
Early Tattoos  
Tattoos often reflect patterns of pottery



# Religion and Ceremony

---

- Megaliths







# Menhir

---

- Single stones, upright in the ground



# Carnac (France)



Carnac (France) c. 4000 BCE

---





# Dolmen

---



# Stonehenge





1877





---

- Tenon





