

- Tonight

- Read pgs 1-27, Quiz Tuesday

Unit 4 Part 3

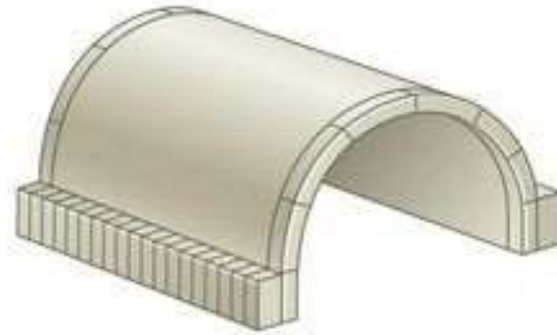
Gothic Styles...mostly

Romanesque Art

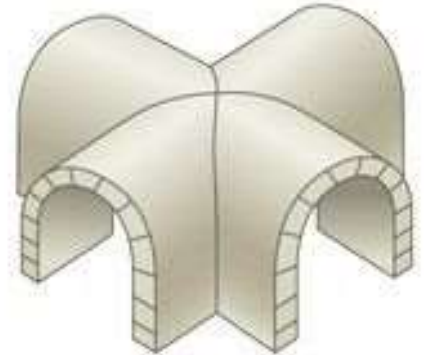
Romanesque Style

- Classical (Greco-Roman) Characteristics

- Arches
- Vaults
- Sculpture



barrel vault (Romanesque)



groin vault (late Romanesque)



rib vault (late Romanesque and early Gothic)



fan vault (Gothic)

Romanesque Style

- Classical (Greco-Roman) Characteristics
- Wide geographic region
- Continued Role of the Catholic Church
- Conflict vs. Unity



Romanesque Style

- Economic and Political Developments
 - Continued Islamic Expansion
 - Byzantine Decline
 - Regional Kingdoms
 - Economic Growth
 - Italian wealth and stability
 - Italian Peninsula government systems





Romanesque Style

- Christian Pilgrimage
 - Why?
 - Importance of relics and reliquaries
 - Importance of Rome and Jerusalem



Romanesque Style

- Christian Pilgrimage
 - Why?
 - Importance of relics and reliquaries
 - Importance of Rome and Jerusalem
 - Influence of pilgrimage on architecture



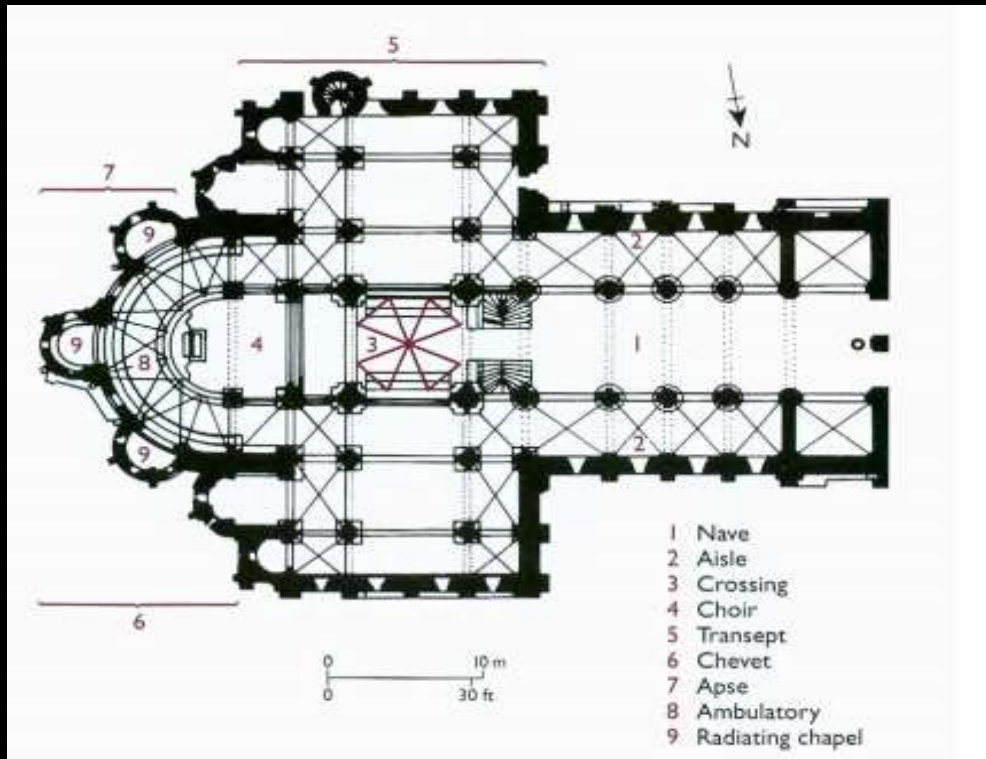
Romanesque Style

- Decoration and the Illiterate
 - [Sainte-Foy, c. 1050-1120](#)
 - Reliquary of Sainte-Foy
 - Concerns over idolatry
 - Roman head



Romanesque Style

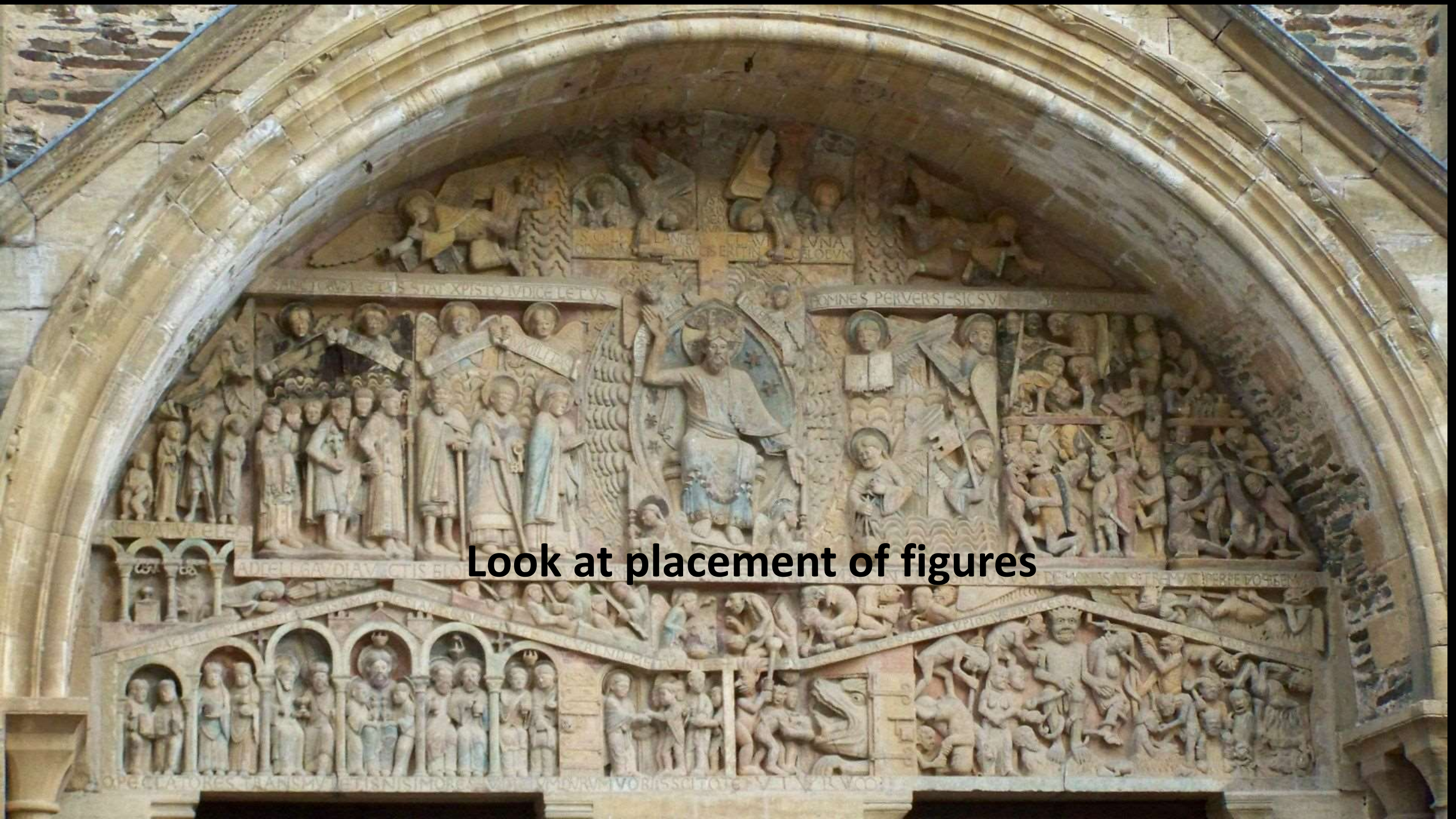
- Church of Sainte-Foy
 - Conques, France
 - c. 1050-1120



Romanesque Style

- Decoration and the Illiterate
 - [Sainte-Foy, c. 1050-1120](#)
 - Relief Sculpture
 - “Portals” – Doorways
 - Why here?
 - Program = Arrangement and meaning of subjects
 - “The Last Judgement”
 - Western Portal Relief





Look at placement of figures

Romanesque Style

- Cathedral of Saint-Lazare,
Autun, France
- c. 1130
- [The Last Judgement](#)









- Weighing Souls

- Where have we seen this idea before?

- Spiritual substance

- Saved weigh more





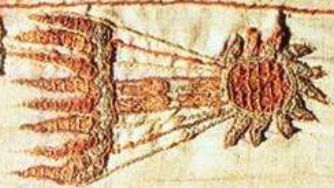
Bayeux Tapestry

- c. 1070-1080
- Wool on linen
- Embroidery
 - Norman invasion of England
 - Artistic team
 - As a document?
 - Point of view



[Animated Bayeux Tapestry](#)

ISTI MIRANT STELLA



HAROLD



VBI VNVS: CLERICVS: ET: HIC VVIL

ÆLEGY VA



Comics Storytelling Tools: Bayeux Tapestry (c. 1077) ©2010 www.MarekBennett.com

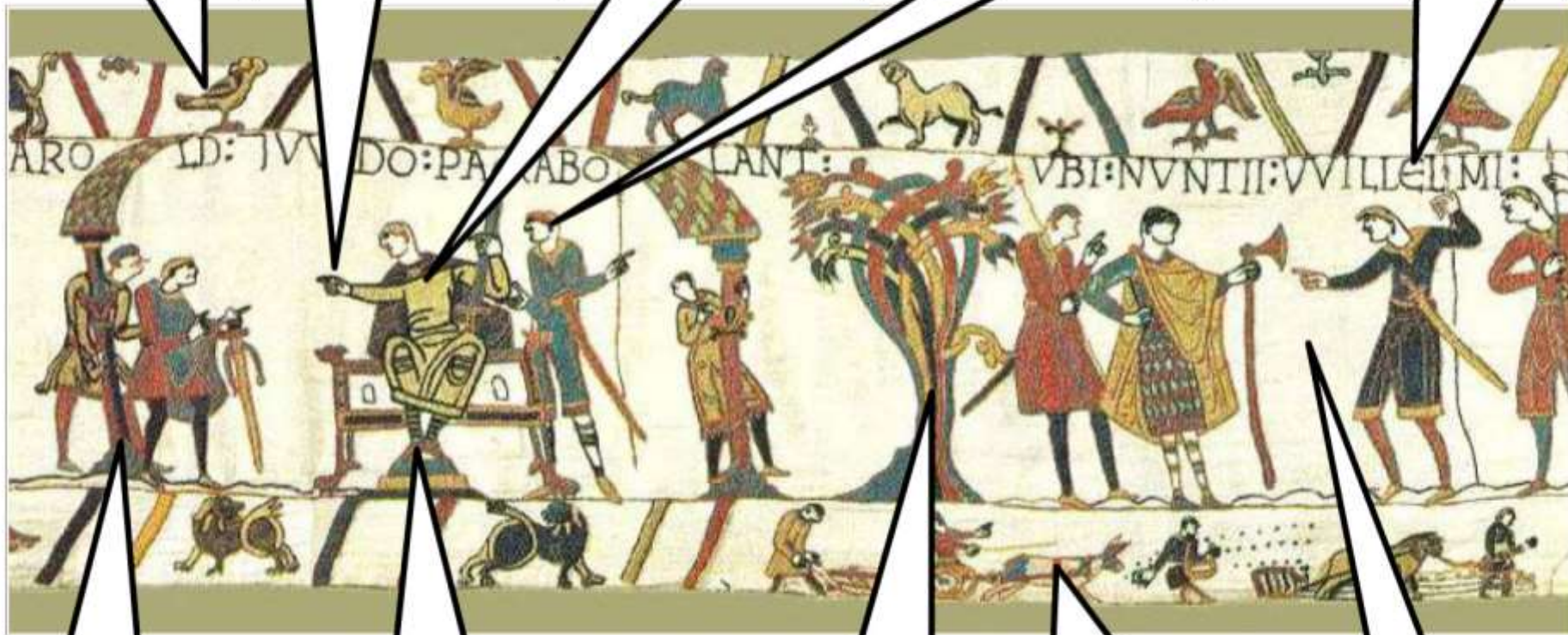
**Ornamental
Animals**
Decorate and reflect
events in main story.

Pose, Body Language
Gives you a sense of each
character (e.g., pointing
commanding hand, timid
captive or servant, etc.)

CONTRAST
Light & dark areas draw
the eye to important
characters.

Hair, Clothing
Indicate ethnicity
(English=mustache,
Norman=shaved back of head)
AND social status.

Captions
Clear text explains names
and major events in the
plotline.



**Buildings, Environment,
& Furniture**
show details about how
people lived, traveled,
and sheltered...

Size of Character
indicates importance,
status, power, and
current situation in plot.
(e.g., king = BIG!)

Ornamental dividers
(in this case, trees)
break up the story
into a sequence of
scenes (like "panels"
in modern comics)

Informational Ornaments
show details about life,
including work, sports,
food production, scandals,
myths & fables, etc.

SPACE!
Notice how empty
space can give a
character or gesture
added importance...

The APAH Research Paper

It isn't that bad...calm down

Today: We finish Unit 3

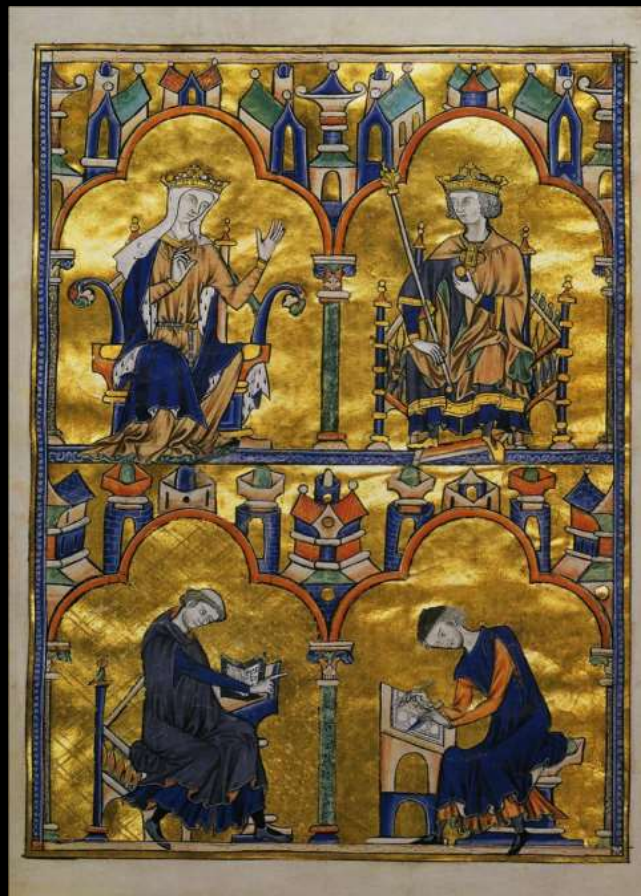
- **Pick up a 9 weeks exam open response sheet**
 - Answers submitted to me by the end of the block Friday
 - You may type and airdrop responses, type and print them, or write them by hand
 - All submissions must have your name on them!
- Have a seat – we will begin in a few minutes

Stacked medallions
inspired by tall, narrow
stained glass lancetes

Dedication Page with Blanche of Castile and King Louis IX of France and Scenes from the Apocalypse, from a *Bible moralisée*.

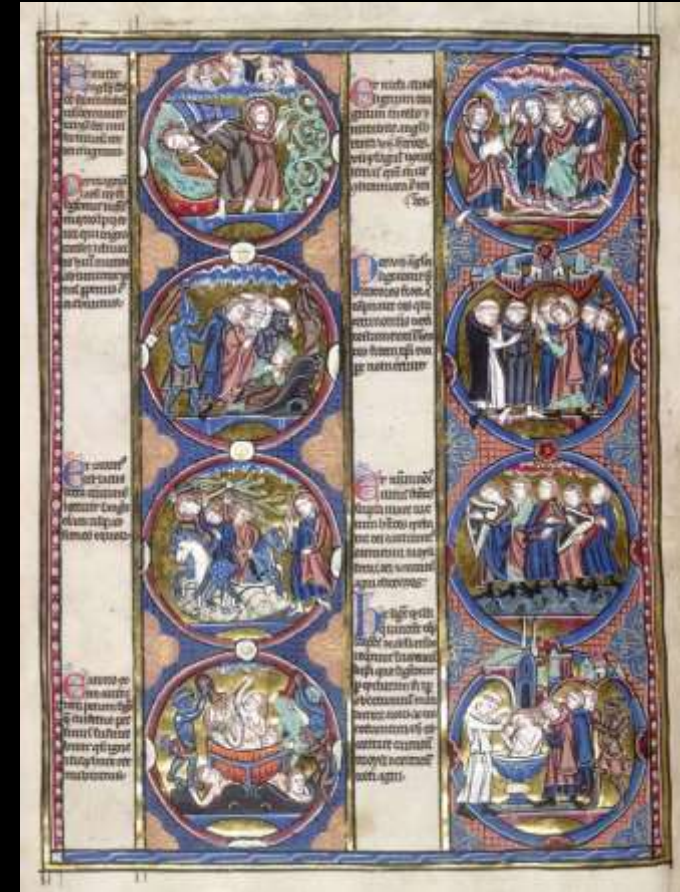
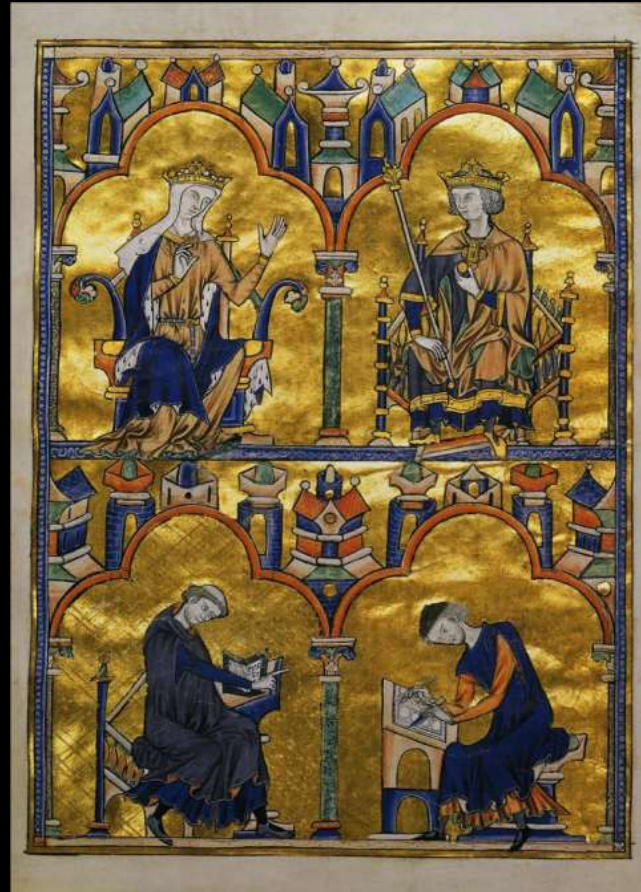
Gothic Europe. c. 1226–1234

Illuminated manuscript (ink, tempera, and gold leaf on vellum).



Dedication Page with Blanche of Castile and King Louis IX of France and Scenes from the Apocalypse, from a *Bible moralisée*.

- *Bible moralisée* = Made for French Royals
- Biblical passages and historical events/traditions go along with passages – taught morals
- Part of a young royal's education

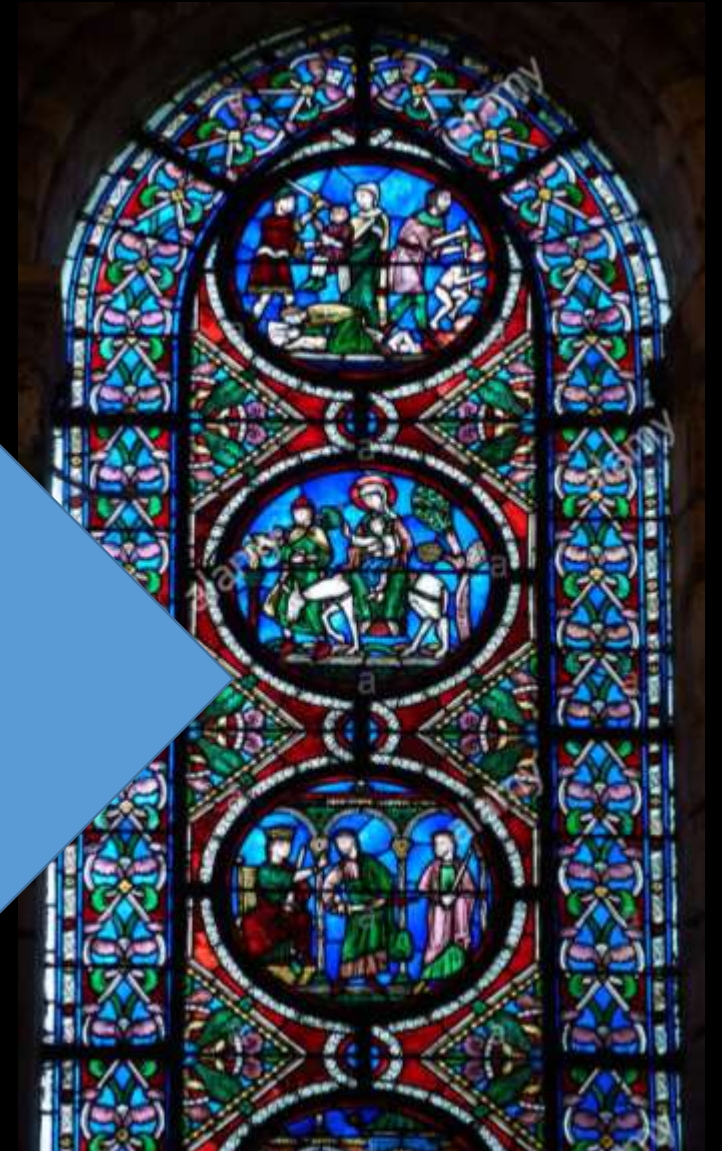




Stained glass
lancet window

Basilica of St.
Denis
(1st Gothic Church,
1135-1144)

Paris, France



Blanche
(Regent/Mother)

Louis IX
(King/Son)
Became King @ 12

Virgin Mary
and Christ
Symbolism?



Trefoil Arch
(Symbolic of
the Trinity)

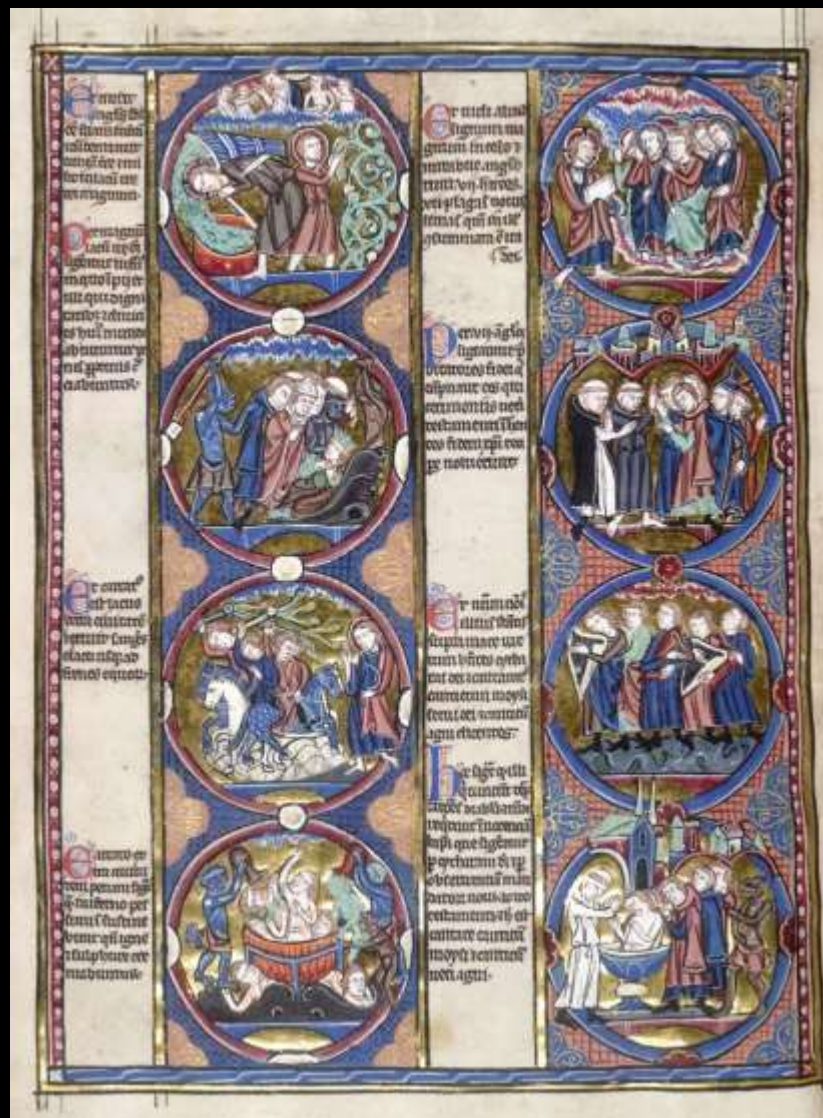


Cleric (Clergy)

Illumination Artist



Note the urban setting (Paris)



Bible Text – Bible Illustration -- Explanatory Text -- Explanatory Illustration

Article: Scenes from
the Apocalypse



Article: Scenes from the Apocalypse





Golden Haggadah (The Plagues of Egypt, Scenes of Liberation, and Preparation for Passover).

Late medieval Spain. c. 1320 C.E.

Illuminated manuscript (pigments and gold leaf on vellum).

Golden Haggadah (The Plagues of Egypt, Scenes of Liberation, and Preparation for Passover). Late medieval Spain. c. 1320 C.E.

- Haggadah = Jewish prayers and scripture for the ritual Passover meal
- Passover?
- Jews in Spain?





Plague of Lice

Plague of Frogs



Plague on Livestock

Plague of Arov (wild beasts)



Pharaoh expels Israelites



Plague of the firstborn



Crossing the Red Sea



Egyptian soldiers in pursuit



**Preparation for Passover:
Unleavened bread and
Sweetmeats given to children**



**Miriam and women play
Instruments and dance**



Sheep are slaughtered and prepared for Passover

Family prepping house for Passover

Gothic Architecture – Basilica of St. Denis and Abbot Suger



Khan Academy!



Chartres Cathedral. Chartres, France. Gothic Europe. Original construction c. 1145–1155 C.E.; reconstructed c. 1194–1220 C.E. Limestone, stained glass.



A brief compare/contrast

Church of Sainte-Foy, Romanesque (1050-1120)

Chartres Cathedral, Gothic (1145-1220)





87'



371'





68' high



123' high

Portal Relief



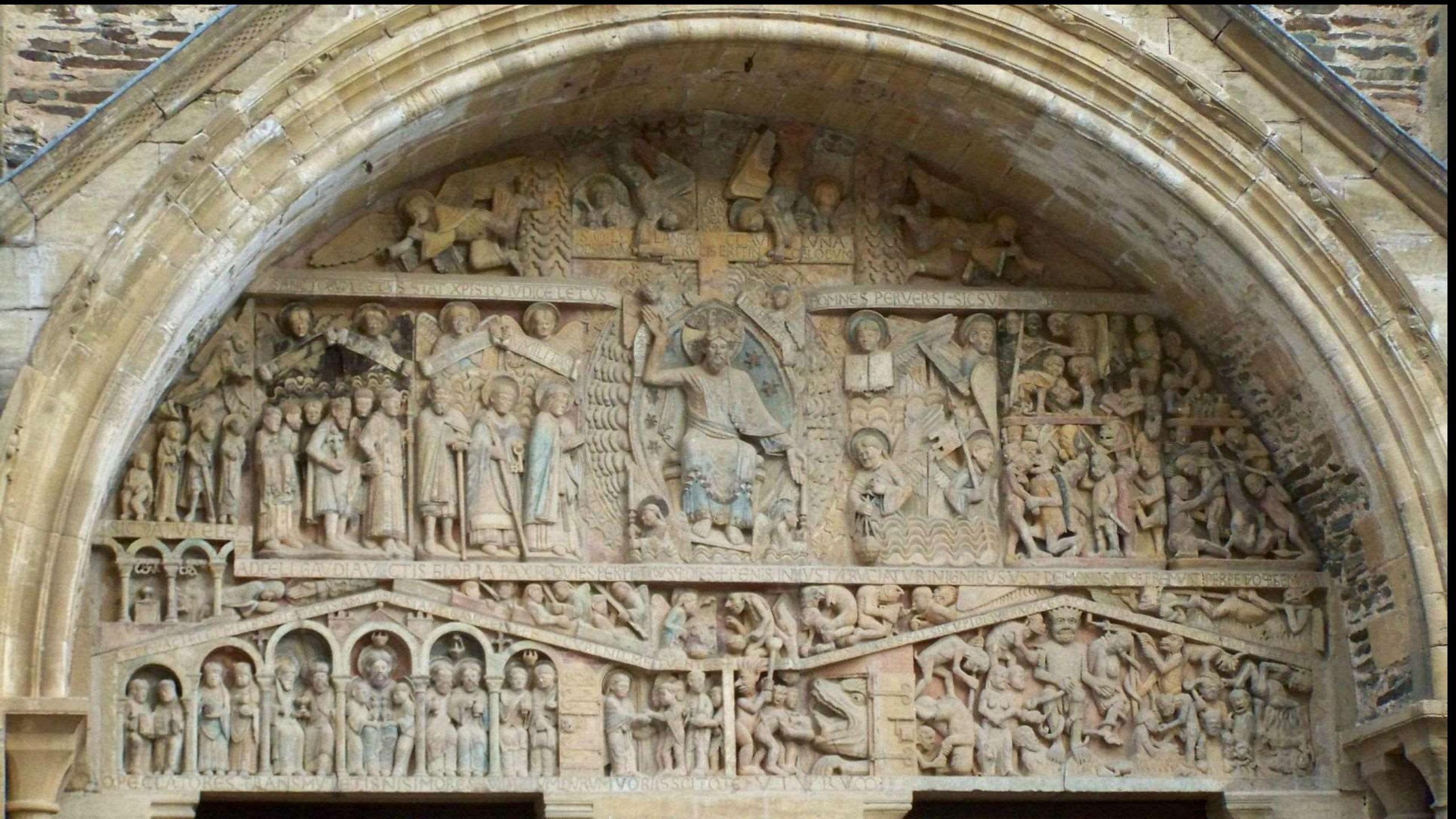
Chartres
Cathedral, Gothic
(1145-1220)





Church of
Sainte-Foy,
Romanesque
(1050-1120)





VNA CLODV

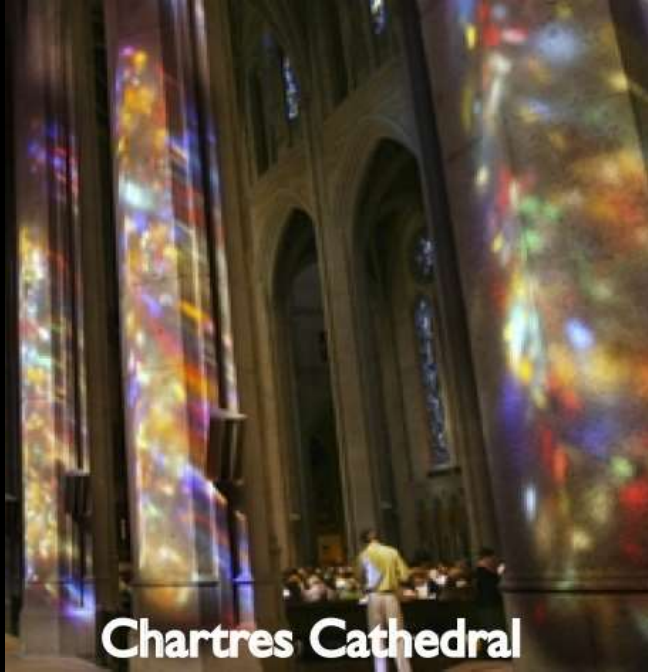
SANTVS ET SIA XPISTO IVDICE ET VS

HOMINES PERVERSI SIC SVN

AD DEI GAVDIA ET SIA FLORIA PATRI DIVES PERPETVVS DES REPENS IN VSTI RUCIATV R INIGNIVS VS DEMONIS TITRE VIT IORPE VORHEM

SVMPTVVS VORHEM

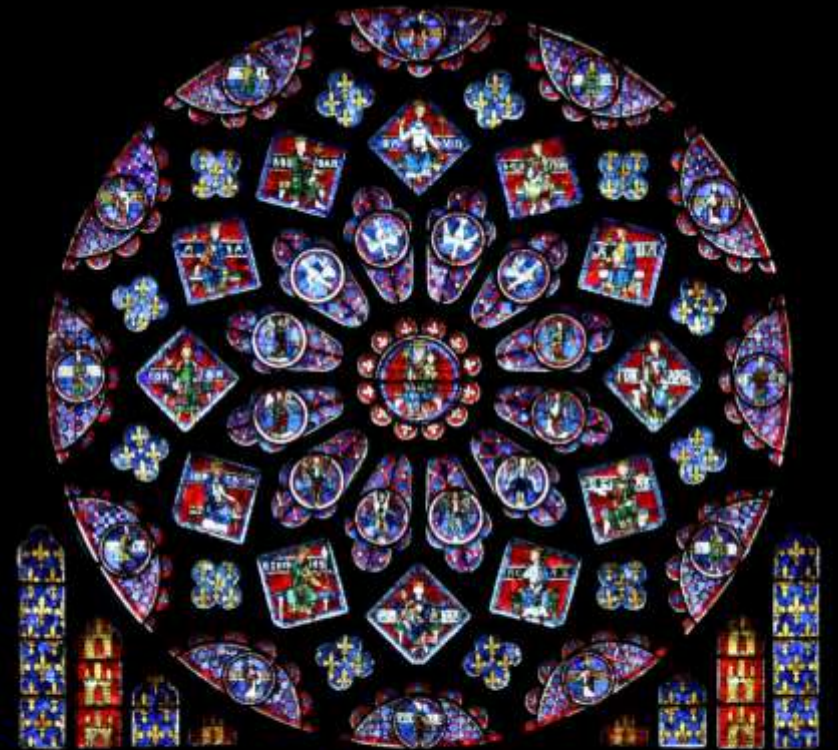
OPLECTAVORES TRANSMI EDISSIONIORS VOR VORV VORISSIOTE VITVORVOR



Chartres Cathedral

Abbot Suger : *Lux Nova*

(Spiritual manifestation of light passing through stained glass)



St. Denis Cathedral



Amiens Cathedral

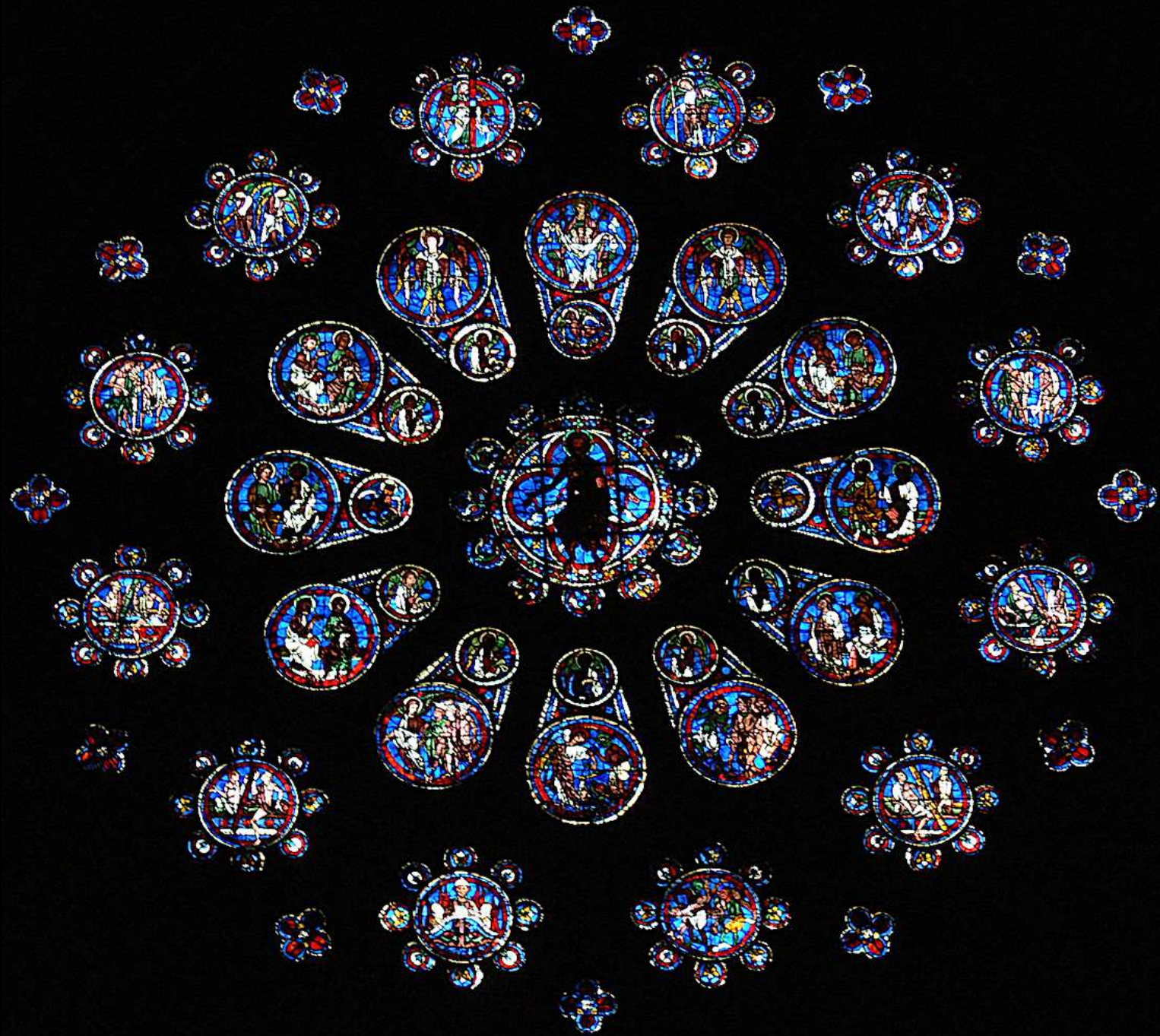


North Transept, Chartres

Rose Window

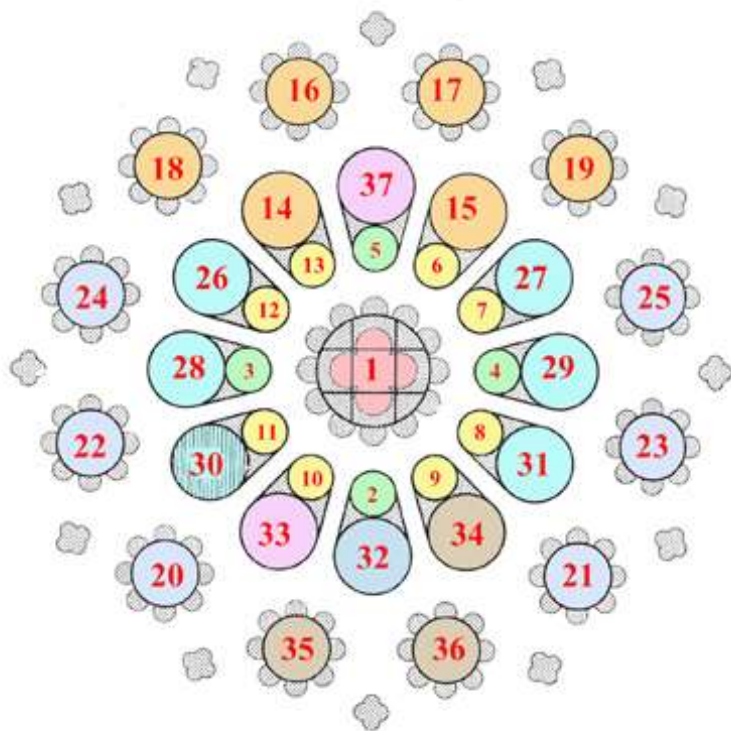
Chartres Cathedral: West Rose Window




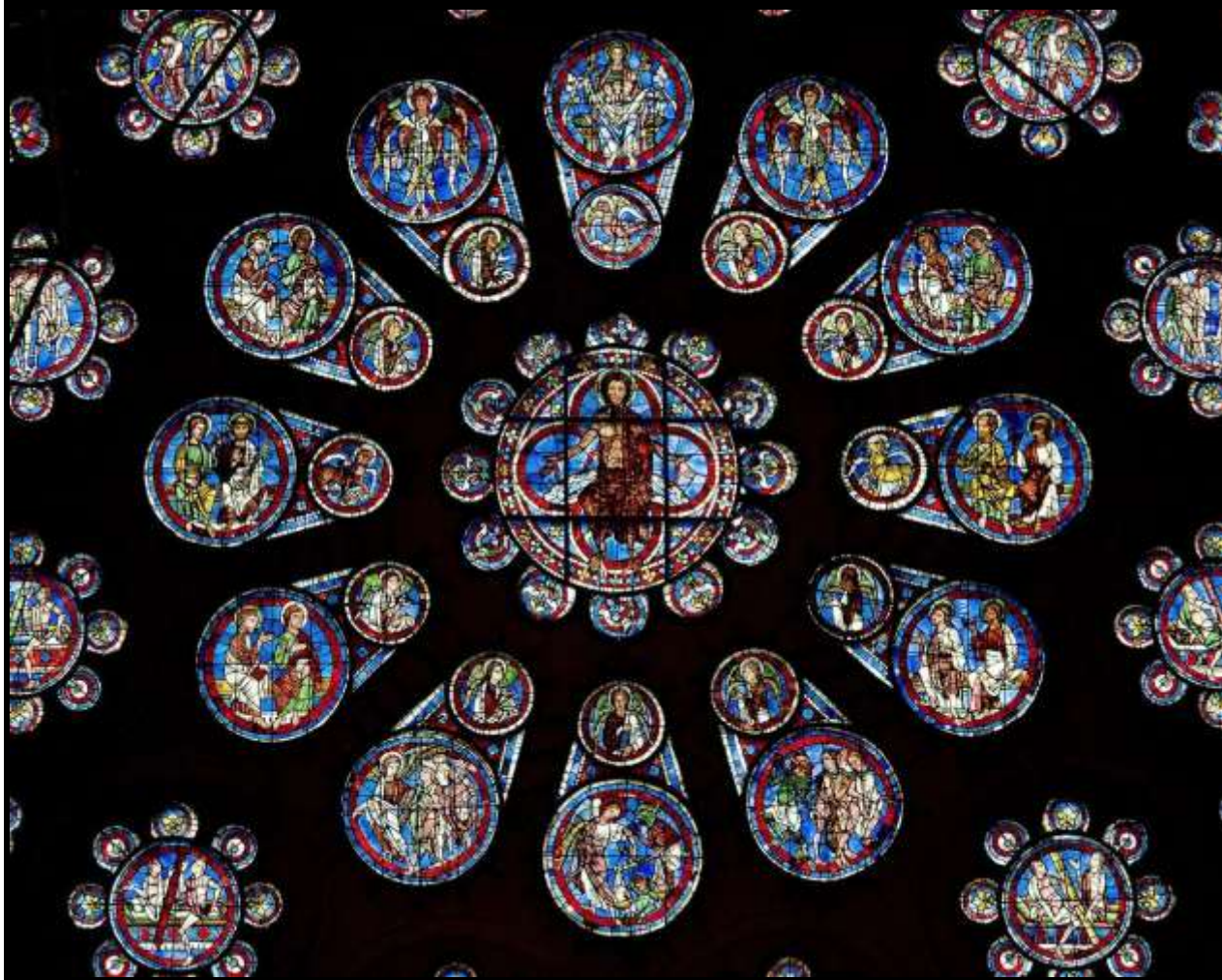


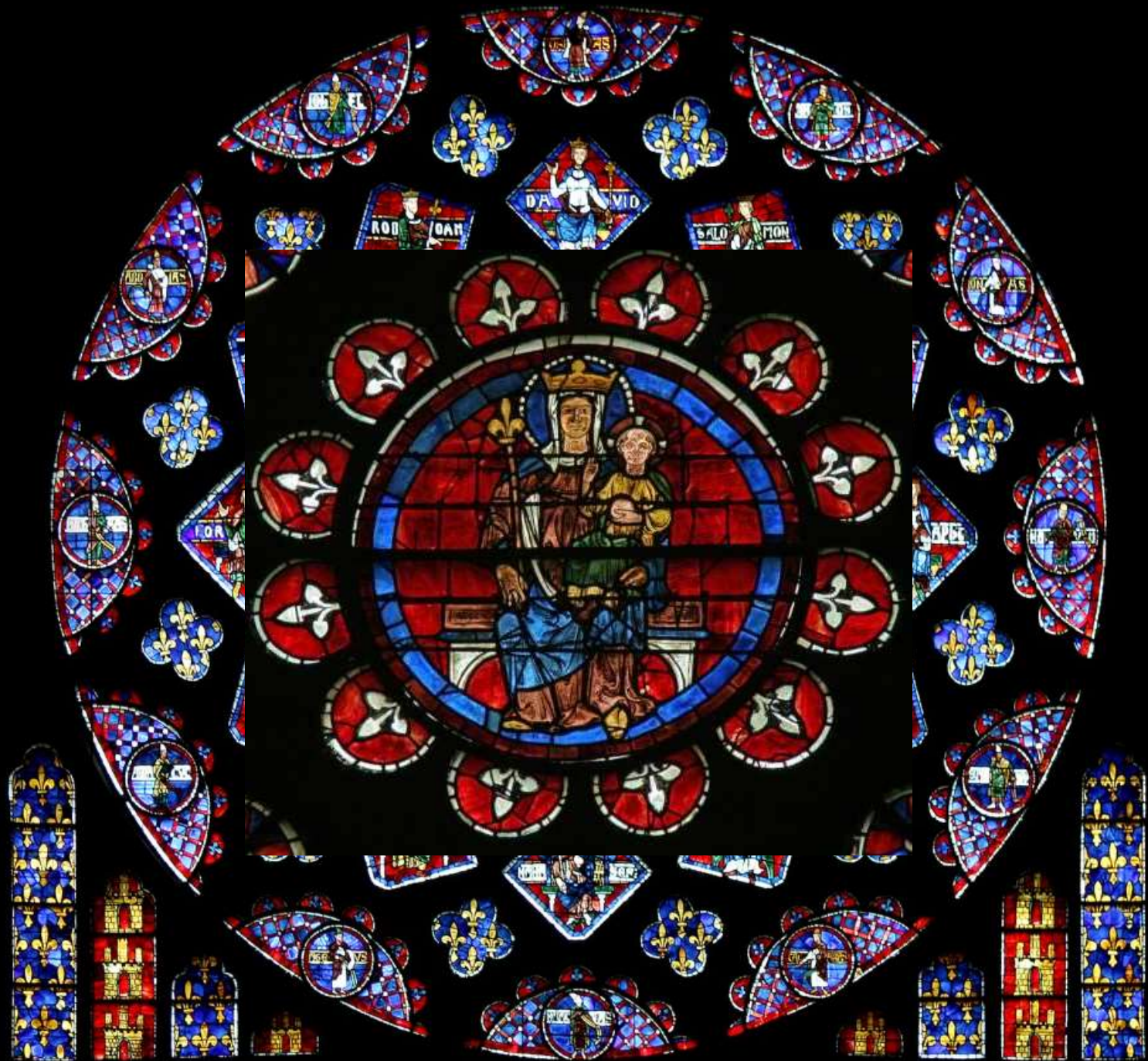
Chartres Cathedral: The West Rose Window (The Last Judgement)

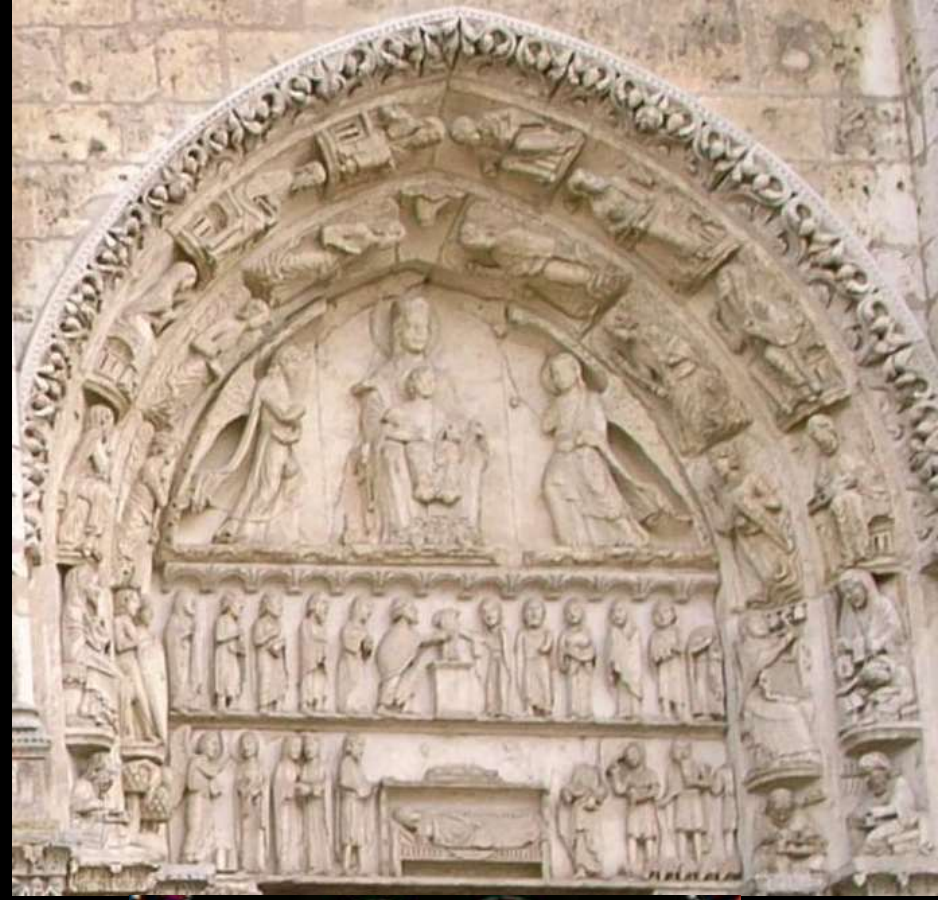
Deremble-Manhes no. 143, Delaporte no. 176



- | | | | |
|---|--|---|------------------------------------|
|  | 1: Christ |  | 20-3: The Dead arise |
|  | 2: Man - symbol of Matthew |  | 24-5: The Dead await judgment |
|  | 3: Lion - symbol of Mark |  | 26-31: Apostles |
|  | 4: Ox - symbol of Luke |  | 32: Michael weights souls |
|  | 5: Eagle - symbol of John |  | 33: The Blessed taken to Heaven |
|  | 6-3: Angels |  | 34: The Damned taken to Hell |
|  | 14-5: Cherubim |  | 35: Hell Mouth |
|  | 16-7: Angels with Instruments of the Passion |  | 36: The Damned are tormented |
|  | 18-9: Angels blowing trumpets |  | 37: The Blessed in Abraham's bosom |
|  | Modern |  | Decorative motifs |







...e de la B...



This is an old, old documentary on Chartres Cathedral Chartres, France. It has great visuals and great information, though! Taking notes on your image set would be wise. It is about 30 minutes.







- *Röttgen Pietà*, c. 1300-25
- painted wood
- 34 1/2 inches high

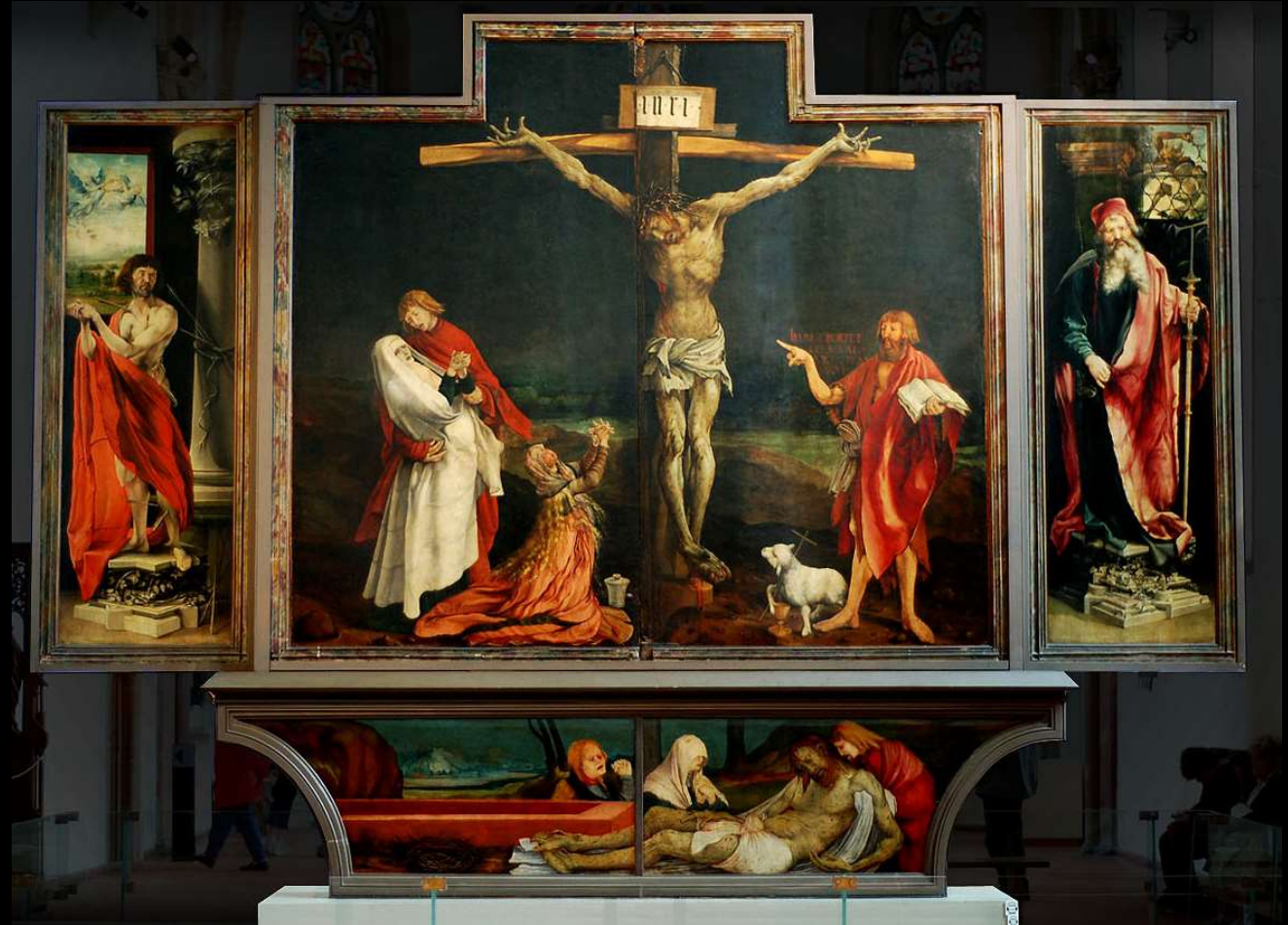


Isenheim altarpiece.

Matthias Grünewald.

c. 1512–1516 C.E.

Oil on wood.







Form: Polyptych – many paneled altarpiece

Function: commissioned by monastery to go into chapel hospital

Context: patients suffered from Ergotism



Gangrene is the death of tissue in part of the body.



Foul-smelling discharge

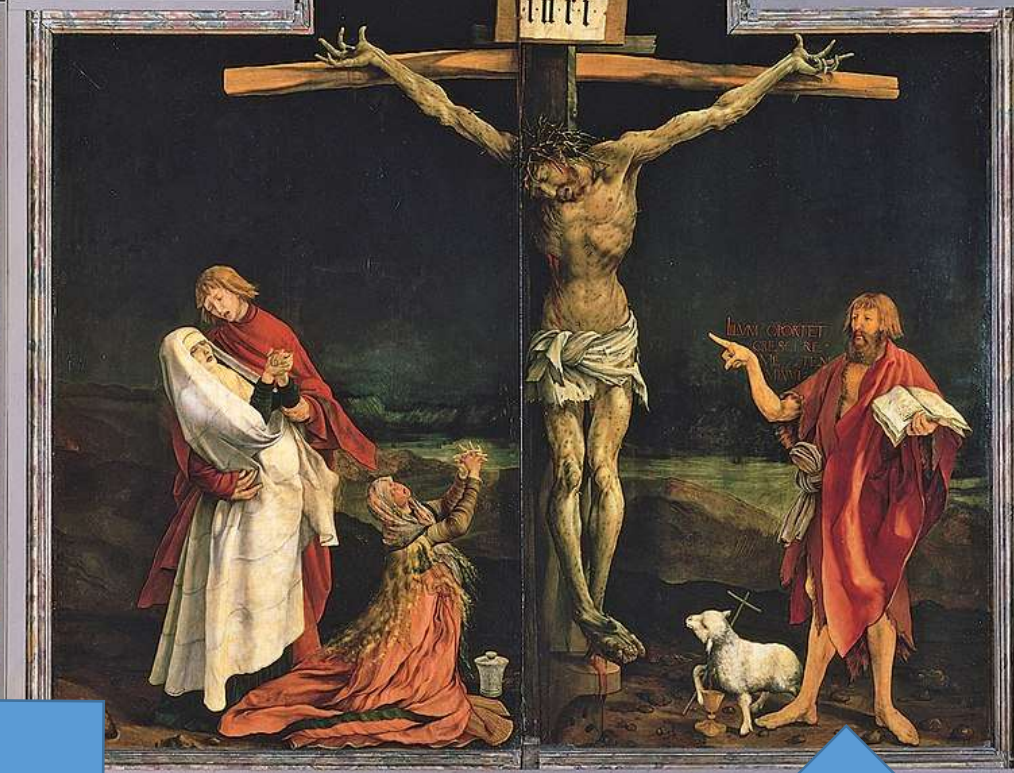
Surface and subsurface discoloration

ADAM.



Function, Form, Content, and Context merge in this piece

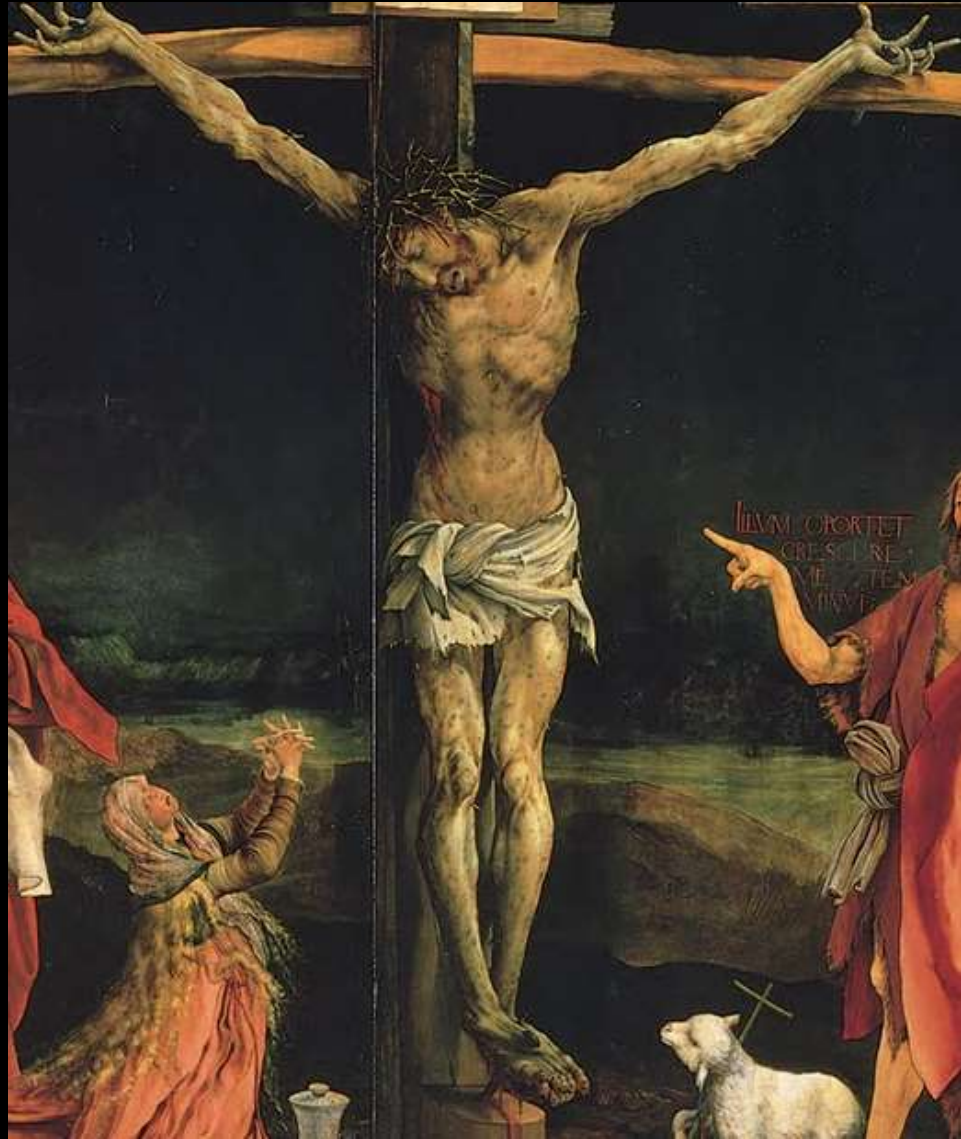
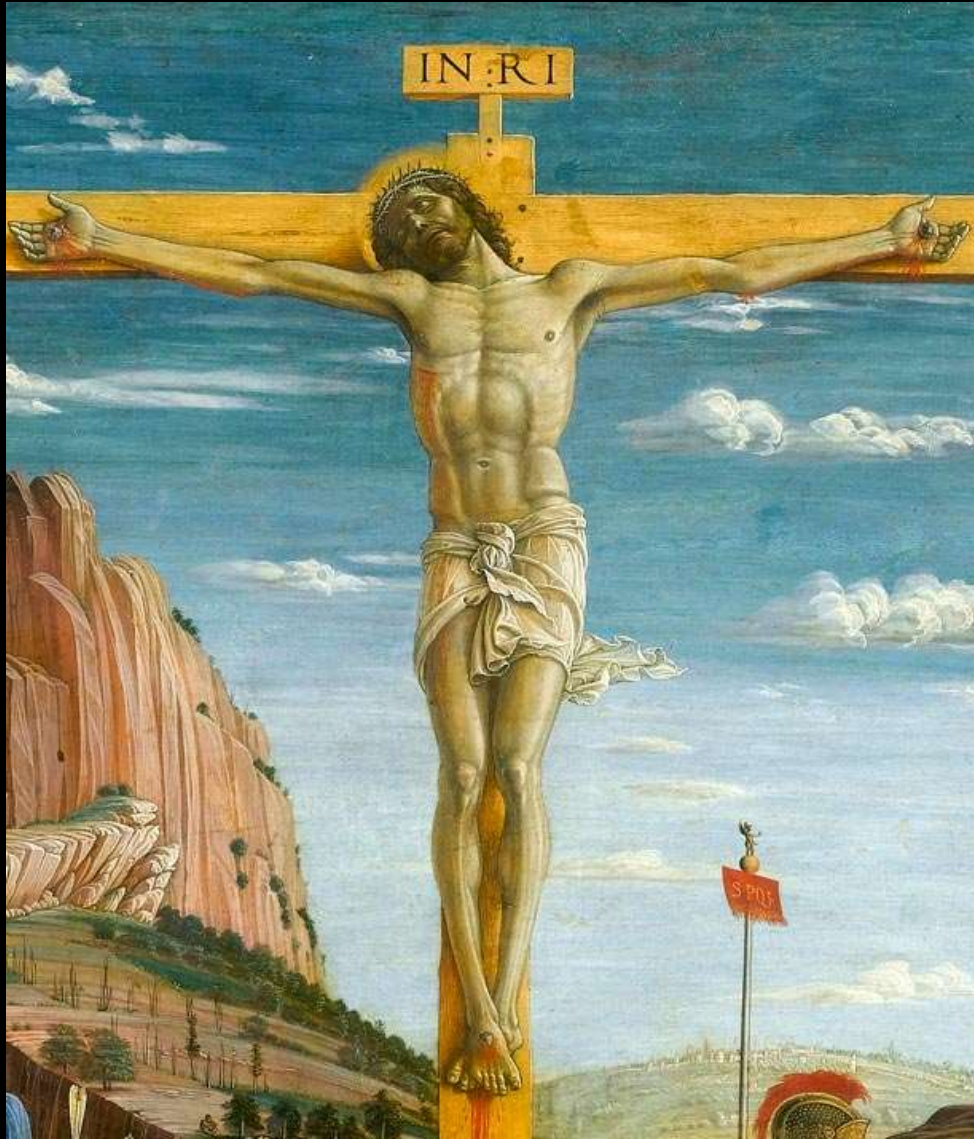
St Sebastian: Patron St. of Plague

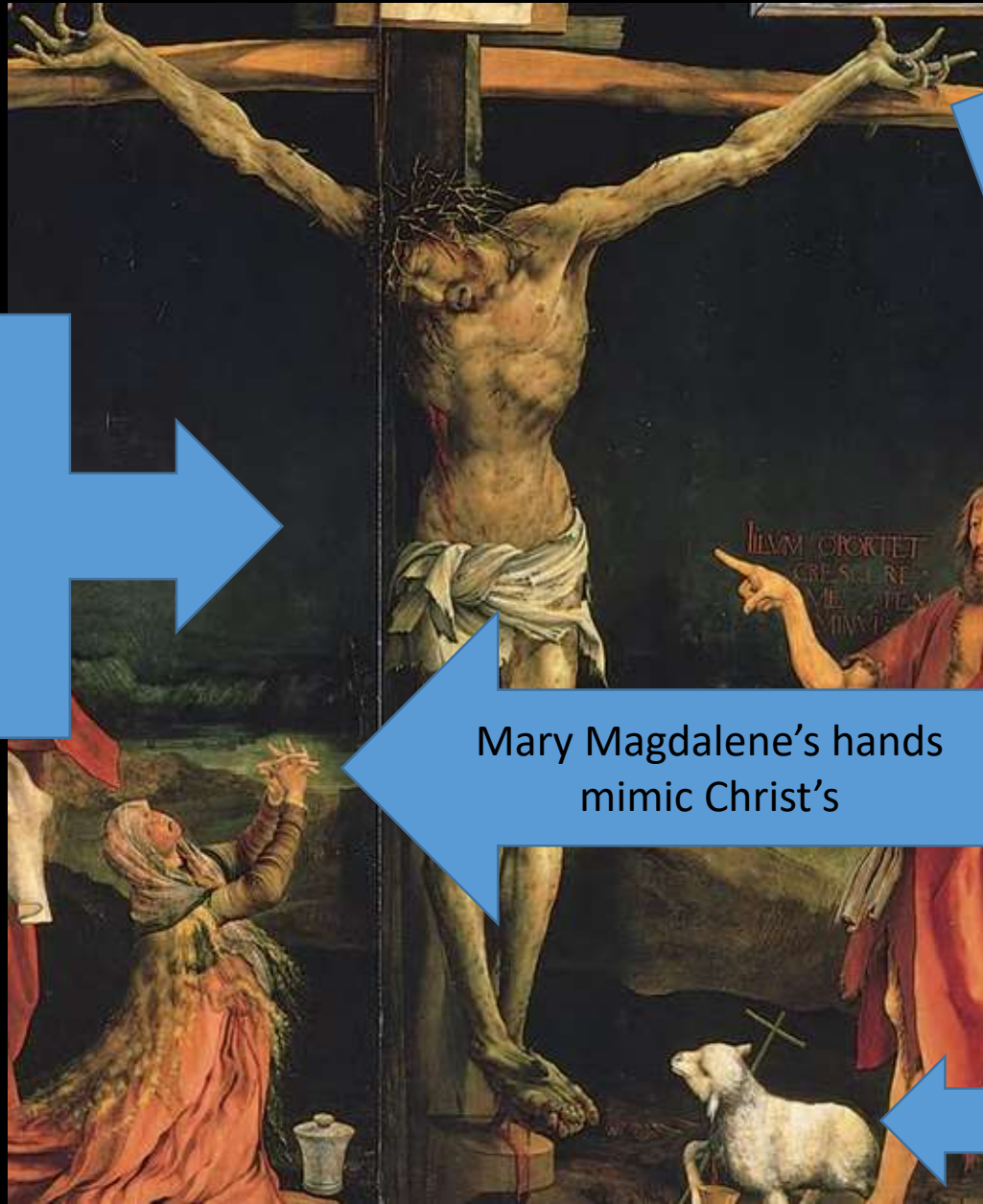


St. Anthony: Patron St. of Ergotism

John supports Mary, dressed in white like hospital's nurses

John the Baptist calmly points to Jesus, knowing this is not the end



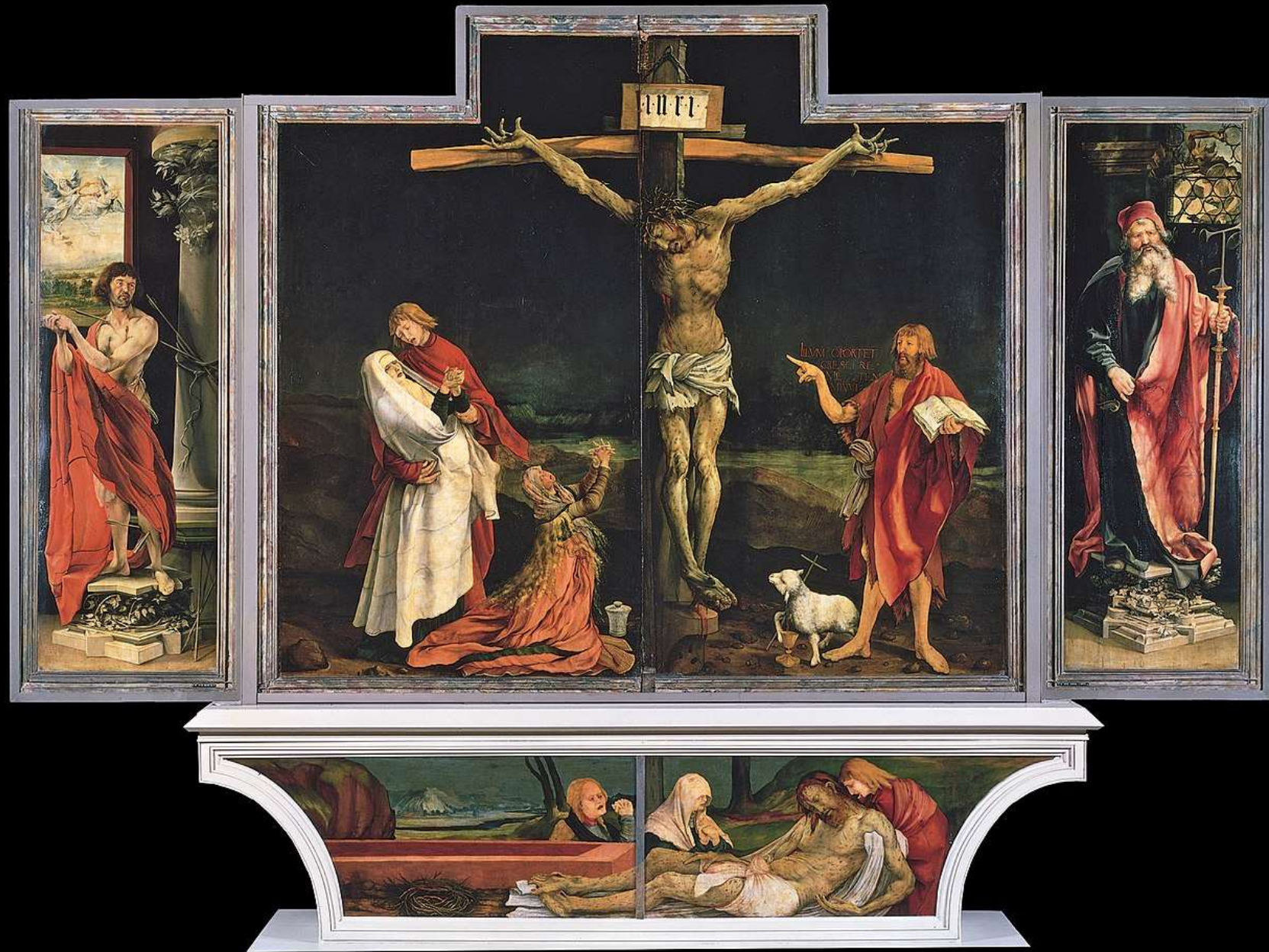


Notice Christ's skin...why make it look like this?

Splayed fingers: a sign of ergotism

Mary Magdalene's hands mimic Christ's

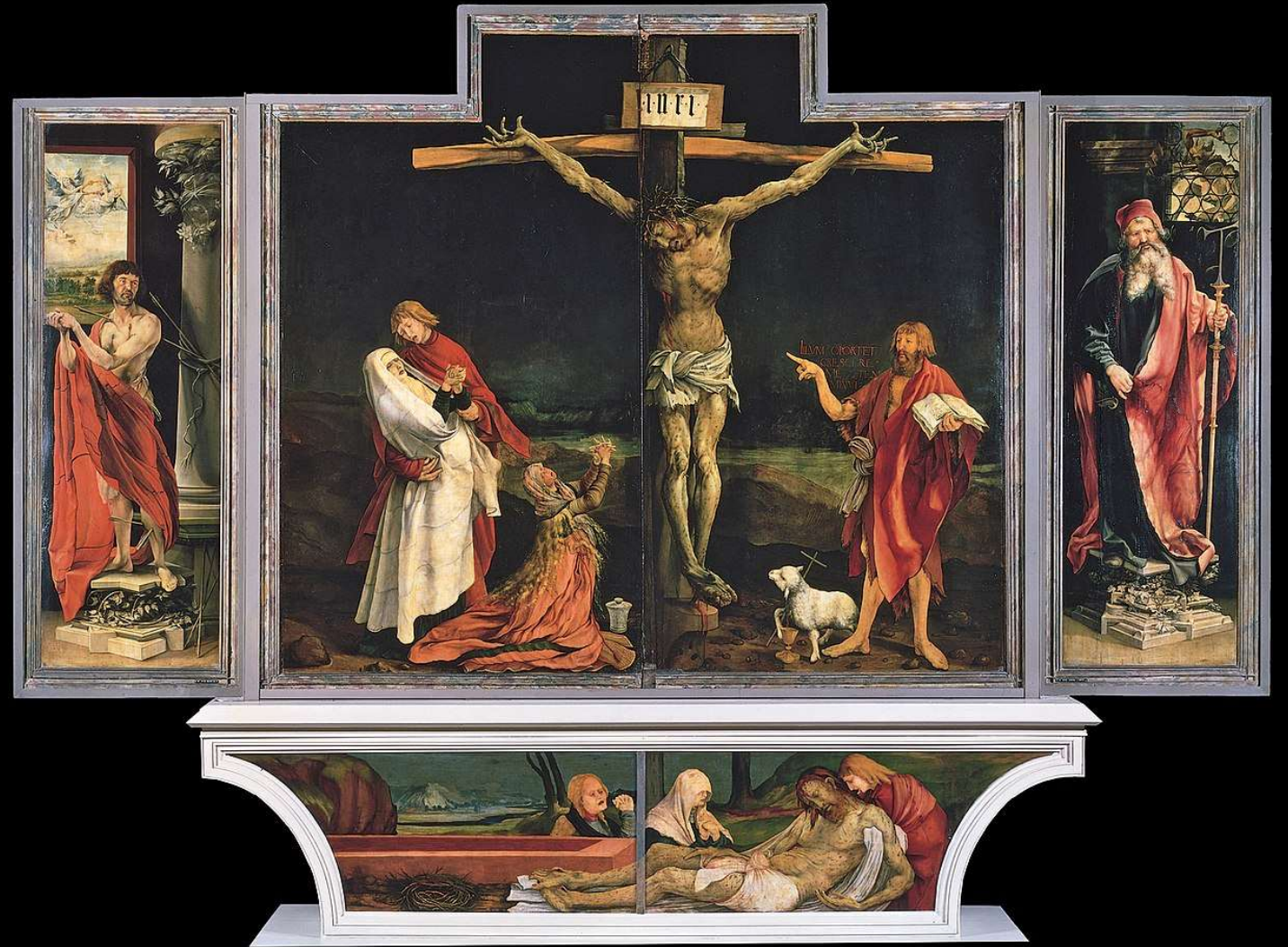
Lamb bleeds from chest wound into communion cup

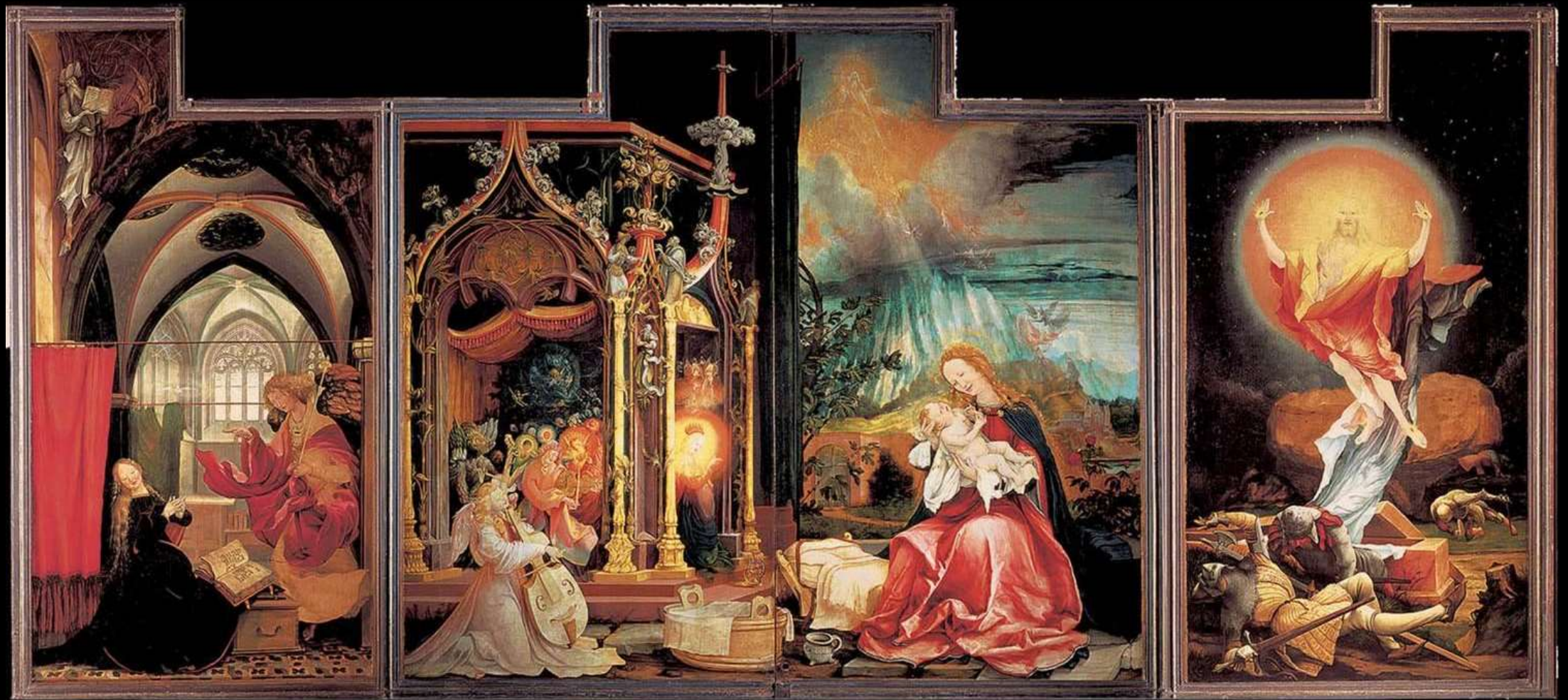




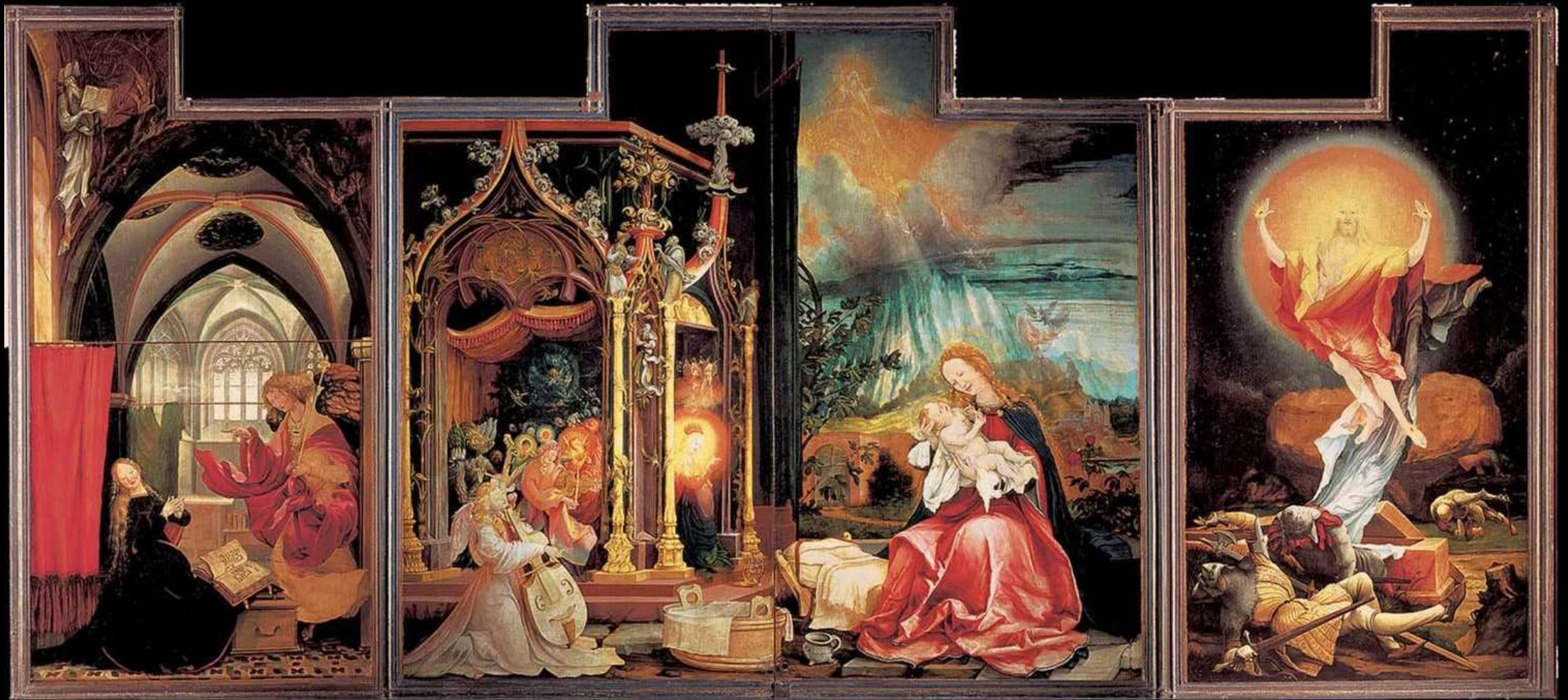
Once again – putrefied, rotting flesh

Odd Nighttime Setting:
Allowed artist to limit
colors to those
associated with death.
Black, white, red,
greenish brown





Opened on special religious dates

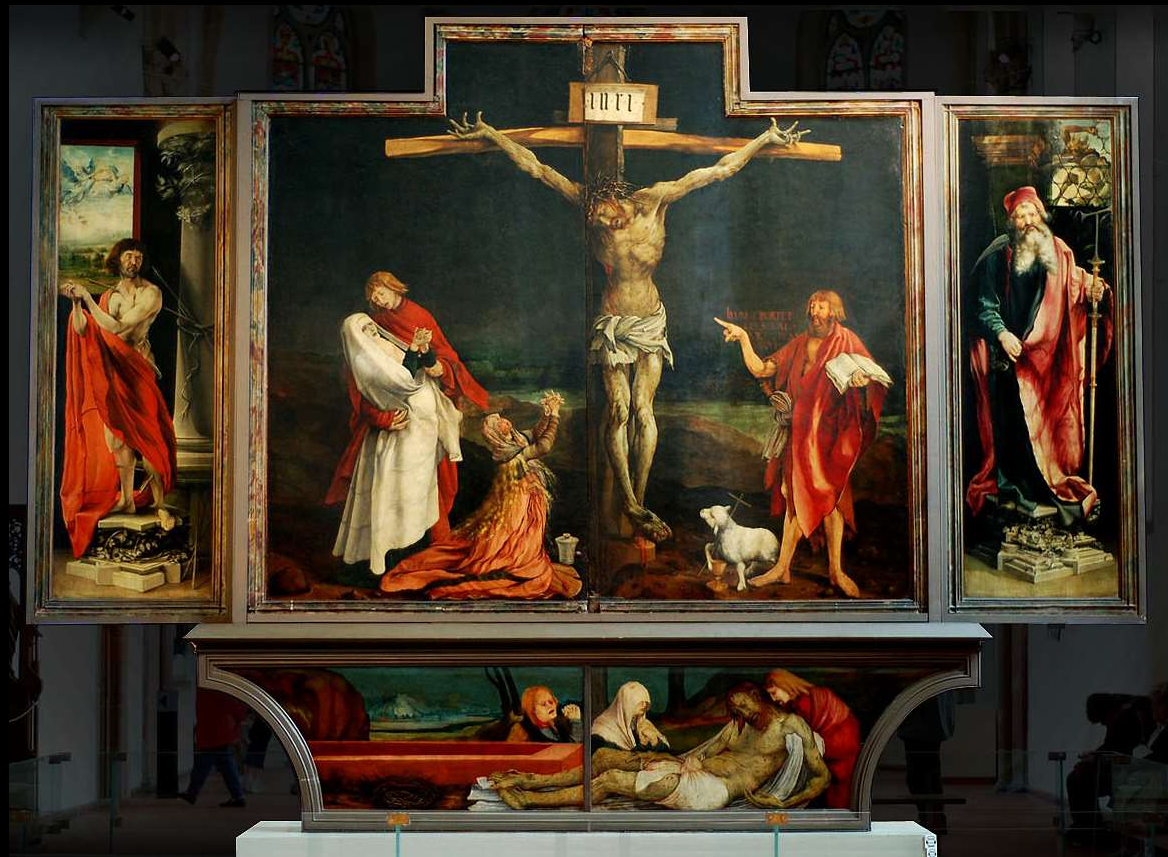


Annunciation

Nativity

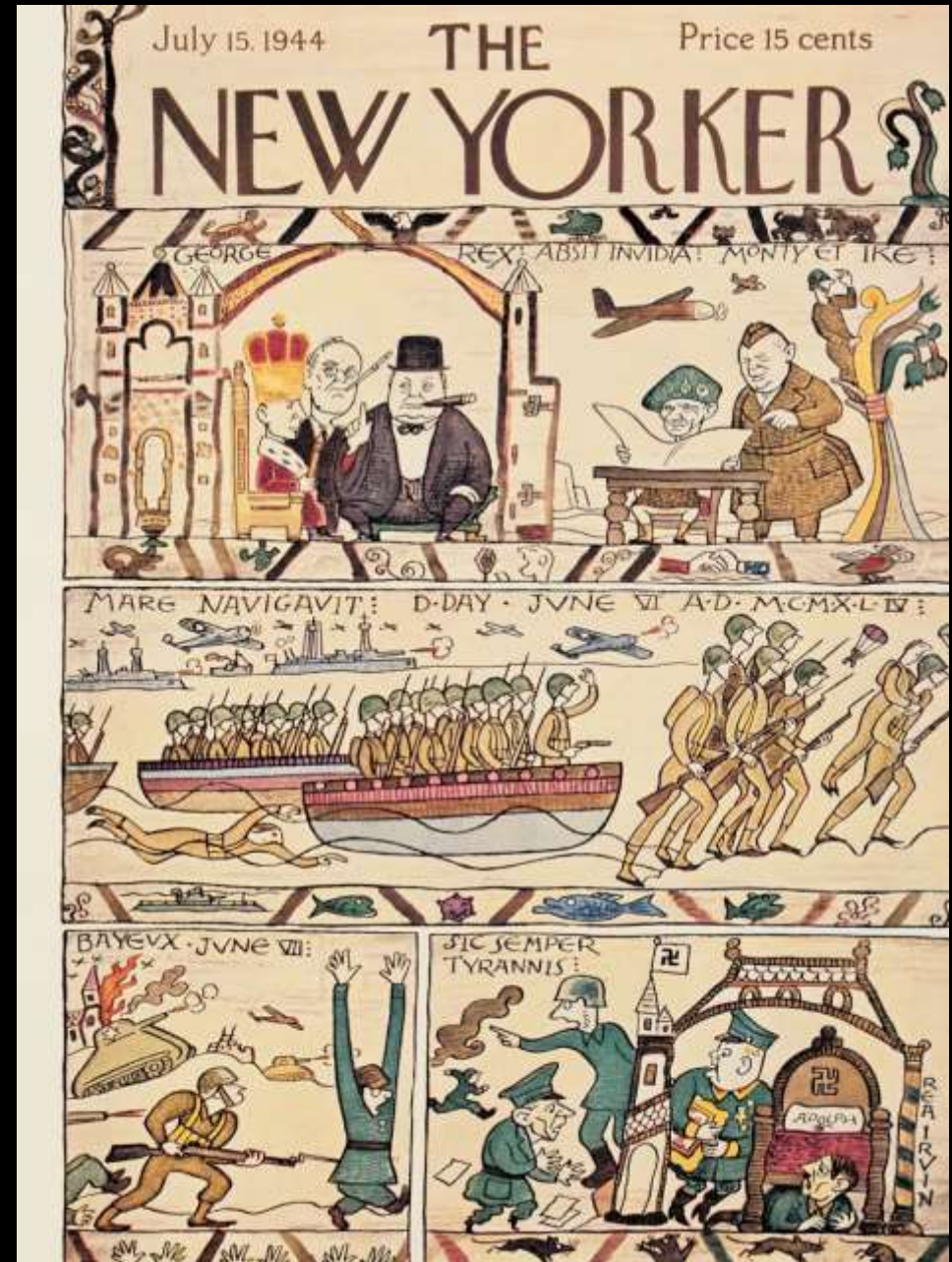
Resurrection

Discuss the functions and context of *The Isenheim Altarpiece*. How does this work conform to the Renaissance characteristic of humanizing religious figures in art during the period? Compare/contrast this to the Roettgen Pieta. (25 pts)



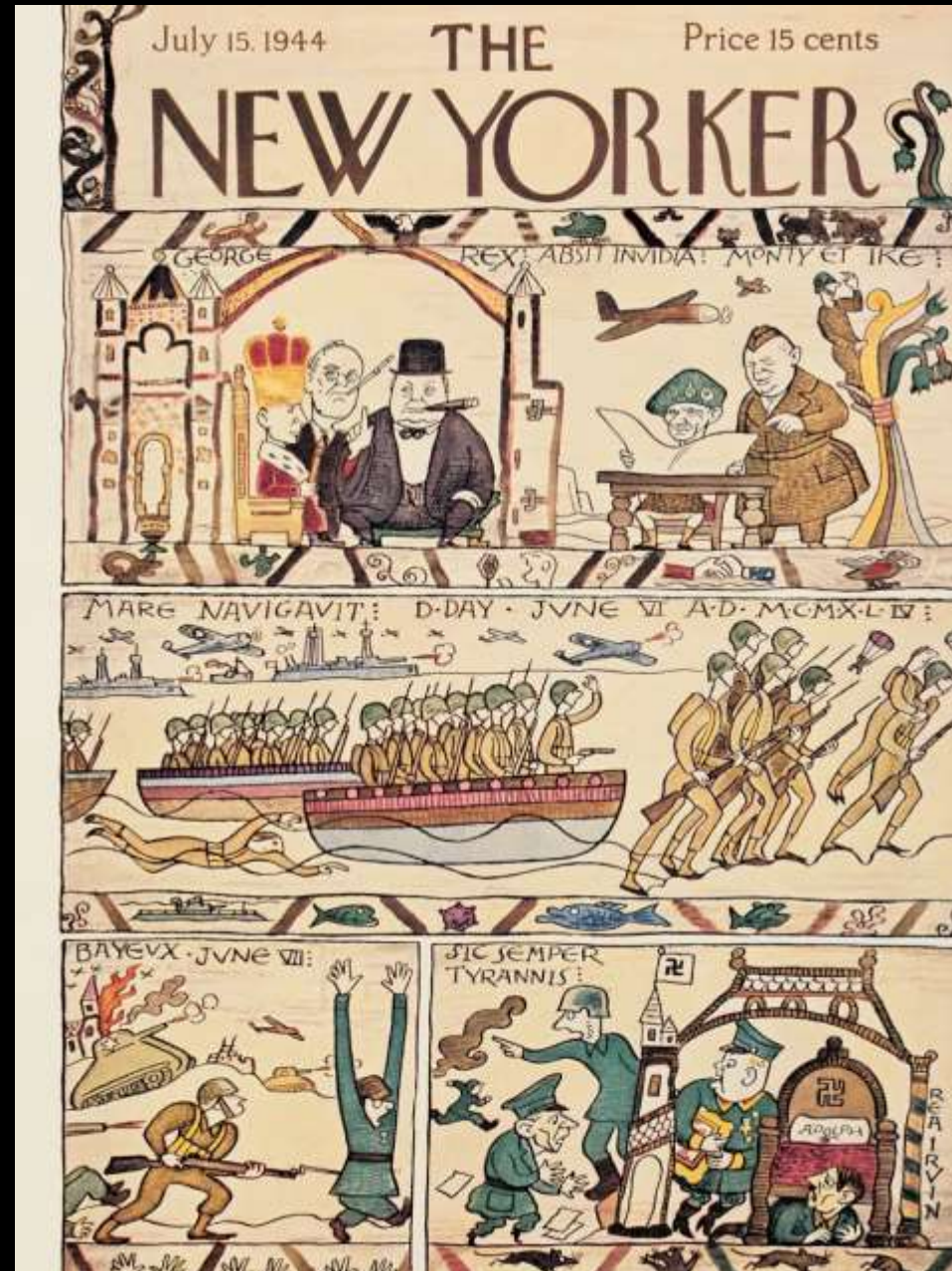
Tomorrow

- Reading quiz pgs 1-27



Tonight

- Read pgs 16-27



Today

- Use this block for research and writing
- Gothic Art and Architecture essay due November 6
- *History of Western Art* books are available in the bookshelf if you need them for citation information
- Annotated image set is updated
- Tomorrow: Reading quiz on pgs 1-27 in packet